

# The Global “Flight From Marriage”: Has It Come to the Arabic World? A First Look at the Evidence

Nicholas Eberstadt, Ph.D.  
Henry Wendt Chair in Political Economy  
American Enterprise Institute  
<eberstadt@aei.org>

Doha International Institute for Family Studies and Development  
Doha, Qatar  
January 2013

# Outline

The “Second Demographic Transition” –Western Europe

The “Flight From Marriage”—East Asia

The New Marital Trends in the Arabic Speaking World

Arabic Societies’ New Marriage Patterns In Western Perspective

Concluding Observations

# Countries Under Consideration

## Arabic Speaking Societies

Algeria  
Bahrain\*  
Egypt  
Iraq  
Jordan  
Kuwait\*  
Lebanon  
Libya  
Oman\*  
Morocco  
Palestine  
Qatar\*  
Saudi Arabia\*  
Syria  
Tunisia  
UAE\*  
Yemen

\* = GCC Member

## Developed “Western” Societies

### EU-15 Countries    North America

Austria  
Belgium  
Denmark  
Finland  
France  
Germany  
Greece  
Ireland  
Italy  
Luxembourg  
Netherlands  
Portugal  
Spain  
Sweden  
United Kingdom

Canada  
United States

### East Asia

Hong Kong  
Japan  
Republic of Korea  
Singapore

# Main Data Sources In This Analysis

United Nations Population Division, *World Marriage Data 2008*

<http://www.un.org/esa/population/publications/WMD2008/Main.html>

United Nations Statistics Division, UNData Database

<http://data.un.org>

World Bank, *World Development Indicators*

<http://data.worldbank.org/data-catalog/world-development-indicators>

International Institute for Applied Systems Analysis (IIASA)

*Projection of Populations by Level of Educational Attainment, Age and Sex for 120 Countries for 2005-2050*

<http://webarchive.iiasa.ac.at/Research/POP/edu07>

# Some Concepts Discussed In This Presentation

Second Demographic Transition

“Flight From Marriage”

Singulate Female Mean Age at Marriage (SMAM)

Age-Specific Percentage Of Women Never Married

Age-Specific Percentage Of Women Not Currently Married

Crude Marriage Rate

Crude Divorce Rate

Divorces per 100 Marriages

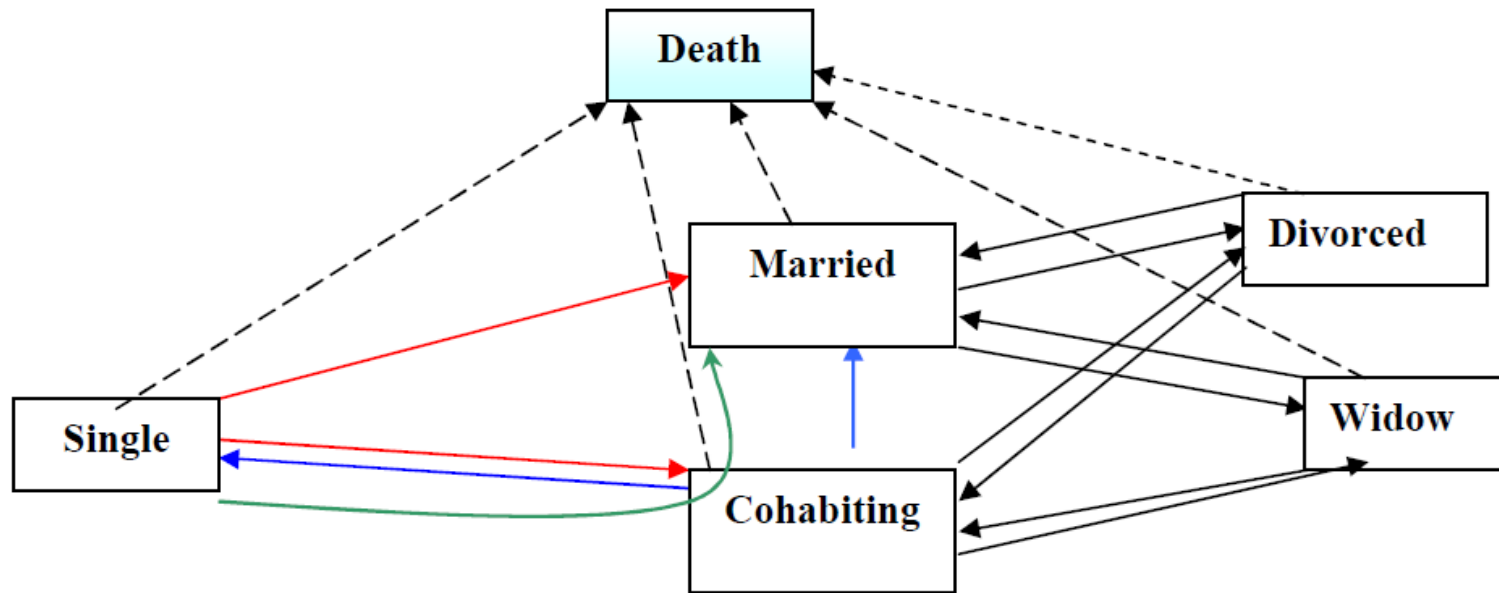
Total Female First Marriage Rate

Total Female Divorce Rate

Cohabitation Rate

Extramarital Birth Ratio

# Transition from Never-Married (“Single”) Status: Possible States And Pathways



# Features of The “Second Demographic Transition (SDT)” and The Asian “Flight From Marriage (FFM)” By Contrast to Previous Early Postwar “Universal Marriage” Regimens

|   | SDT                    | FFM                   |
|---|------------------------|-----------------------|
| First Identified                                      | 1986                   | 1990s                 |
| Where   | Western Europe         | East Asia             |
| Key Researchers                                       | van der Kaa, Lesthaege | Leete, GW Jones       |
| Mean age at marriage                                  | Sharp rise             | Sharp rise            |
| (Not currently married<br>in childbearing age groups) | Sharp rise             | Sharp rise            |
| Percent never marrying                                | Sharp rise             | Sharp rise            |
| Total divorce rate                                    | Sharp rise             | Some increase (maybe) |
| Non-marital cohabitation                              | Sharp rise             | Still very limited    |
| Extramartial childbearing                             | Sharp rise             | Still very limited    |
| Fertility Level                                       | Below replacement      | Below replacement     |

# Total Female First Marriage Rates and Total Female Divorce Rates

## EU15 Countries, c. 1965-2000

| EU-15 Countries, c.1965-2000 |  |                                  |      |                      |                           |        |                     |     |
|------------------------------|--|----------------------------------|------|----------------------|---------------------------|--------|---------------------|-----|
|                              |  | Total Female First Marriage Rate |      |                      | Total Female Divorce Rate |        |                     |     |
|                              |  | 1965                             | 1985 | 2000                 | 1965                      | 1985   | 2000                |     |
| Austria                      |  | 1                                | 0.68 | 0.55                 | 0.14                      | 0.31   | 0.43                |     |
| Belgium                      |  | 1                                | 0.65 | 0.51                 | 0.1 <sup>x</sup>          | 0.27   | 0.45                |     |
| Denmark                      |  | 0.99                             | 0.57 | 0.73                 | 0.18                      | 0.14   | 0.45                |     |
| Finland                      |  | 0.93                             | 0.58 | 0.62                 | 0.13                      | 0.28   | 0.51                |     |
| France                       |  | 0.99                             | 0.54 | 0.61                 | 0.11                      | 0.31   | 0.38                |     |
| Germany                      |  | 0.98 <sup>i</sup>                | 0.63 | 0.59                 | 0.13                      | 0.34   | 0.41                |     |
| Greece                       |  | 1.06 <sup>ii</sup>               | 0.83 | 0.54                 | 0.05 <sup>xi</sup>        | 0.11   | 0.18                |     |
| Ireland                      |  | 1                                | 0.69 | 0.59 <sup>vii</sup>  |                           | n/a    | n/a                 | n/a |
| Italy                        |  | 0.98 <sup>iii</sup>              | 0.67 | 0.64                 | 0.05 <sup>xii</sup>       | 0.08   | 0.13                |     |
| Luxembourg                   |  | 0.88 <sup>iv</sup>               | 0.56 | 0.49 <sup>viii</sup> | 0.1 <sup>xiii</sup>       | 0.31   | 0.47                |     |
| Netherlands                  |  | 1.05 <sup>v</sup>                | 0.57 | 0.59                 | 0.07                      | 0.35   | 0.38                |     |
| Portugal                     |  | 0.94 <sup>vi</sup>               | 0.79 | 0.75                 | 0.01                      | 0.11   | 0.39 <sup>xv</sup>  |     |
| Spain                        |  | 0.98                             | 0.64 | 0.6                  |                           | n/a0.1 | 0.1                 |     |
| Sweden                       |  | 0.95                             | 0.53 | 0.49 <sup>ix</sup>   | 0.18                      | 0.45   | 0.55                |     |
| United Kingdom               |  | 1                                | 0.66 | 0.54                 | 0.16 <sup>xiv</sup>       | 0.42   | 0.43 <sup>xvi</sup> |     |

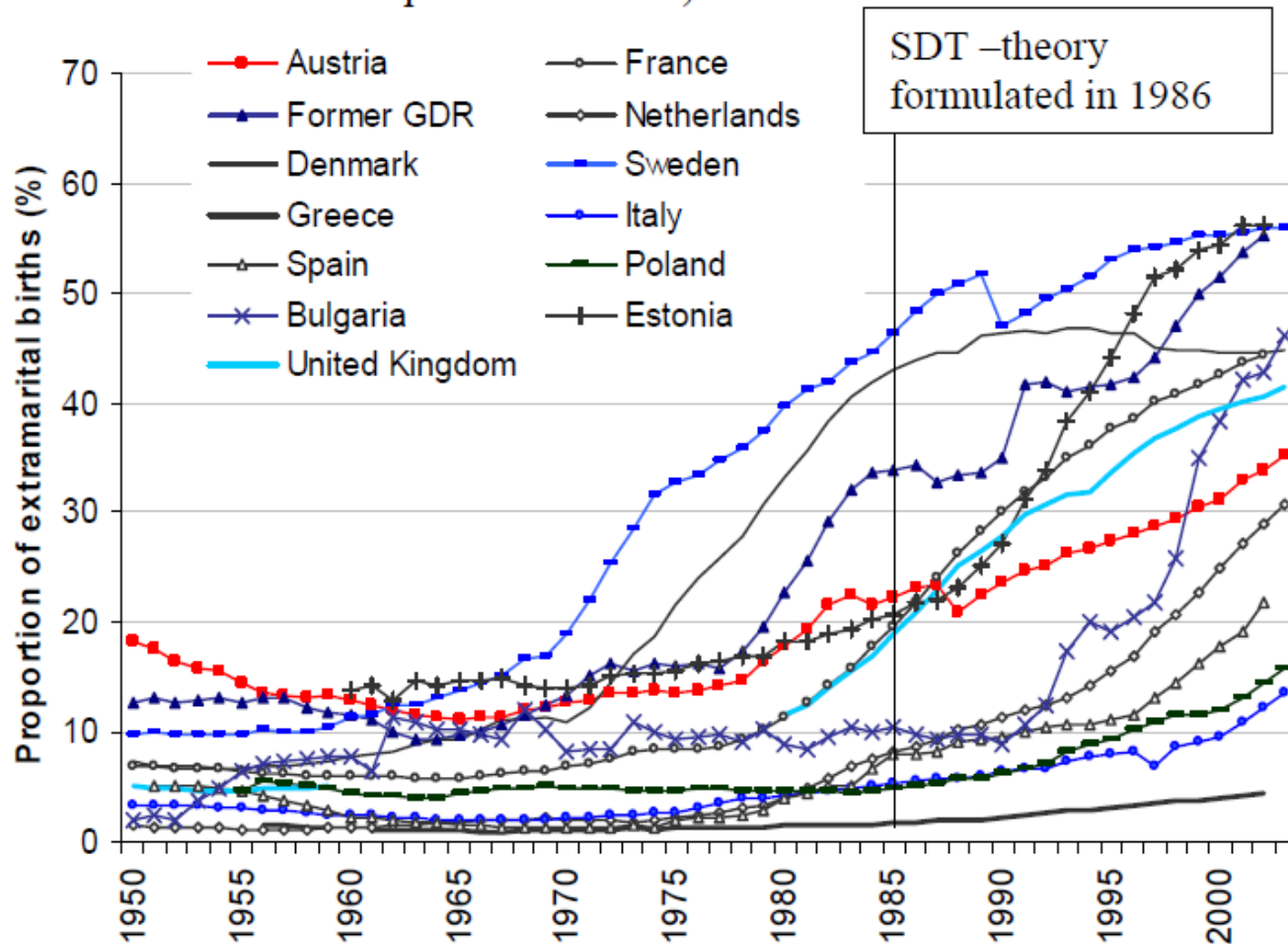
Note: Total Female First Marriage Rate and Total Female Divorce Rate refers to probability, on current age-specific schedules, for a woman to enter into a first marriage by age 50, or for a married woman to divorce by age 50.

Note: For the following observations, measurements were made in these years: i-1970; ii-1970; iii-1960; iv-1970; v-1960; vi-1960; vii-1995; viii-2003; ix-2002; x-1970; xi-1970; xii-1970; xiii-1970; xiv-1970; xv-2002; xvi-1995;

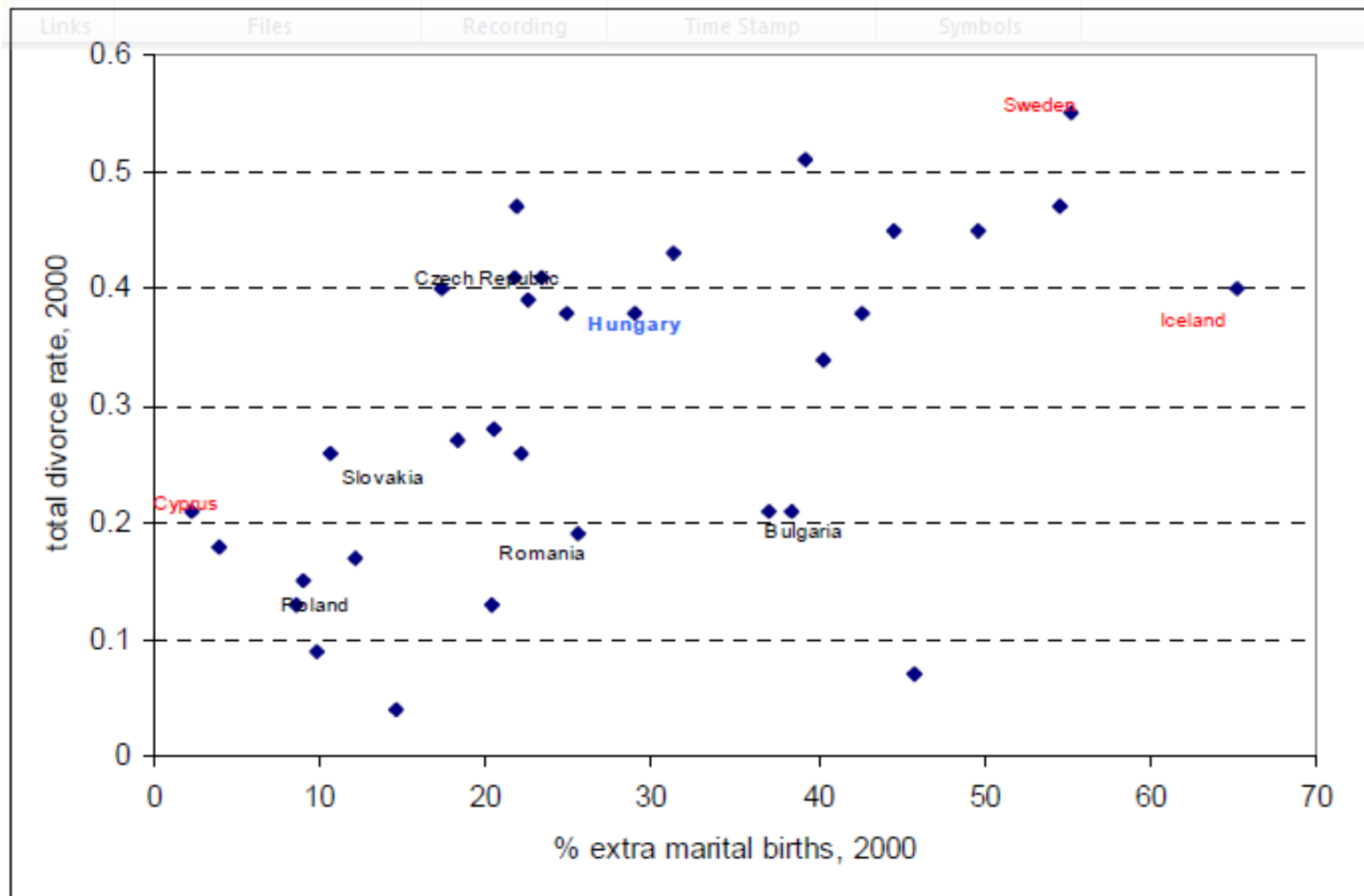


# Percent of Extramarital Births, Selected Countries 1950-2005

(Source: Council of Europe & T. Sobotka)



# Extramarital Birth Ratio vs. Total Divorce Ratio: Europe, 2000



# Partnership and Prevalence of Cohabitation Recent Years<sup>1</sup>

*In % of population of both sexes*

|                          | All ages from 20 years old |         |                  |       | ages 20-34 <sup>2</sup> |         |            |                  | Other |
|--------------------------|----------------------------|---------|------------------|-------|-------------------------|---------|------------|------------------|-------|
|                          | Single, living alone       | Married | Cohabiting       | Other | Single, living alone    | Married | Cohabiting | In parental home |       |
| Australia <sup>3</sup>   | 18.5                       | 51.2    | 8.9              | 21.4  | :                       | :       | :          | :                | :     |
| Austria                  | 16.5                       | 48.3    | 6.5              | 28.7  | 15.3                    | 32.6    | 13.7       | 32.4             | 6.0   |
| Belgium                  | 19.5                       | 48.6    | 6.4              | 25.6  | 18.8                    | 22.0    | 5.2        |                  | 54.1  |
| Bulgaria                 | 14.0                       | 42.4    | 4.2              | 39.4  | 6.4                     | 18.9    | 2.8        |                  | 71.9  |
| Canada                   | 10.7                       | 39.3    | 8.9              | 41.1  | :                       | :       | :          | :                | :     |
| Cyprus <sup>4,5</sup>    | 6.3                        | 61.7    | 0.9              | 41.9  | 4.1                     | 47.6    | 2.1        | 33.8             | 12.4  |
| Czech Republic           | 14.8                       | 51.6    | 2.9              | 30.7  | 11.9                    | 39.0    | 4.2        | 40.1             | 4.9   |
| Denmark                  | 24.1                       | 40.8    | 11.5             | 23.5  | 33.7                    | 25.4    | 28.6       | 7.6              | 4.8   |
| Estonia                  | 18.2                       | 43.9    | 11.8             | 26.1  | 14.1                    | 31.8    | 23.5       | 27.4             | 3.2   |
| Finland                  | 19.6                       | 43.6    | 11.8             | 25.0  | 20.8                    | 27.0    | 28.3       | 17.7             | 6.2   |
| France                   | 22.8                       | 44.6    | 14.4             | 18.2  | 19.4                    | 21.3    | 21.8       |                  | 37.5  |
| Germany                  | 16.4                       | 47.5    | 5.3              | 30.7  | 20.3                    | 33.7    | 13.6       | 23.9             | 8.5   |
| Greece                   | 8.0                        | 56.4    | 1.7              | 33.9  | 6.0                     | 36.4    | 3.1        | 45.5             | 8.9   |
| Hungary                  | 12.0                       | 50.9    | 6.3              | 30.7  | 6.6                     | 39.4    | 11.5       | 36.0             | 6.5   |
| Ireland                  | 10.6                       | 53.4    | 5.9              | 30.0  | 5.5                     | 27.6    | 13.4       | 45.2             | 8.3   |
| Italy                    | 10.8                       | 53.9    | 2.0              | 33.2  | 5.8                     | 30.5    | 3.0        | 51.1             | 9.5   |
| Japan                    | 15.4 <sup>6</sup>          | 47.5    | 2.0 <sup>7</sup> | :     | :                       | 34.8    | :          | :                | :     |
| Latvia                   | 16.5                       | 58.0    | 5.5              | 20.0  | 7.5                     | 35.0    | 6.3        | 51.2             | 0.0   |
| Lithuania                | 14.2                       | 55.0    | 4.1              | 26.6  | 15.4                    | 69.2    | 8.3        | 0.0              | 7.1   |
| Luxembourg               | 19.1                       | 58.2    | 14.0             | 8.7   | 18.0                    | 23.3    | 11.4       |                  | 47.2  |
| Malta                    | 7.0                        | 40.1    | 2.1              | 50.8  | 3.1                     | 31.4    | 0.8        |                  | 64.7  |
| Netherlands              | 15.8                       | 48.1    | 9.3              | 26.9  | 19.5                    | 29.9    | 21.9       | 19.9             | 8.8   |
| New Zealand <sup>3</sup> | 17.6                       | 48.6    | 9.3 <sup>8</sup> | 24.5  | :                       | :       | :          | :                | :     |
| Norway                   | 19.3                       | 44.1    | 10.7             | 25.8  | 21.0                    | 25.0    | 22.7       | 26.6             | 4.7   |
| Poland                   | 11.2                       | 56.3    | 1.3              | 31.1  | 8.0                     | 40.7    | 1.9        | 43.5             | 6.0   |
| Portugal                 | 7.0                        | 56.5    | 4.1              | 32.4  | 4.1                     | 40.5    | 5.9        | 39.0             | 10.6  |
| Romania                  | 7.6                        | 56.1    | 4.3              | 32.0  | 3.1                     | 48.8    | 7.4        | 31.4             | 9.3   |
| Slovenia                 | 9.6                        | 52.7    | 5.4              | 32.3  | 3.8                     | 27.5    | 8.8        | 57.0             | 2.8   |
| Slovak Republic          | 14.6                       | 54.5    | 1.4              | 29.4  | 10.8                    | 40.5    | 1.7        | 42.9             | 4.1   |
| Spain                    | 8.6                        | 53.6    | 3.3              | 34.5  | 5.4                     | 27.3    | 5.5        | 52.1             | 9.7   |
| Switzerland              | 17.5                       | 49.3    | 5.9              | 27.4  | 20.7                    | 35.2    | 12.3       | 21.3             | 10.5  |
| Turkey                   | 3.9                        | 45.7    | 0.2              | 50.3  | 2.4                     | 37.8    | 0.0        |                  | 59.7  |
| United Kingdom           | 14.9                       | 47.3    | 8.7              | 29.0  | 11.4                    | 32.2    | 22.2       | 24.7             | 9.6   |
| United States            | 13.4                       | 52.9    | 5.5              | 28.2  | :                       | :       | :          | :                | :     |
| OECD-25                  | 15.2                       | 49.9    | 6.8              | 27.9  | 14.3                    | 31.4    | 12.4       | 36.4             | 7.7   |

1 Data refer 2000: Estonia, Finland, Latvia, Switzerland and the United States; 2001: Austria, Cyprus, Denmark, Greece, Hungary, Italy, Lithuania, Luxembourg, the Netherlands, Norway, Portugal, Spain, and the United Kingdom; 2002: Ireland, Poland, Romania, Slovenia; 2006 for Australia, New Zealand and Canada; 2007 for Belgium, Bulgaria, France, Luxembourg, Malta, and Turkey.

2 For Belgium, Bulgaria, France, Luxembourg, Malta and Turkey: age 25 to 39.

3 Age from 15 onwards

4 Footnote by Turkey: The information in this document with reference to "Cyprus" relates to the southern part of the Island. There is no single authority representing both Turkish and Greek Cypriot people on the Island. Turkey recognizes the Turkish Republic of Northern Cyprus (TRNC). Until a lasting and equitable solution is found within the context of United Nations, Turkey shall preserve its position concerning the "Cyprus issue".

5 Footnote by all the European Union Member States of the OECD and the European Commission: The Republic of Cyprus is recognized by all members of the United Nations with the exception of Turkey. The information in this document relates to the area under the effective control of the Government of the Republic of Cyprus.

6 The percentage of the population 15 years and over.

7 2002 Japanese National Fertility Survey; age 18-49

8 The data refer to the proportion of cohabiting people among those who have never married.

Sources: Australia: 2006 Census of population; Canada: 2006 Census of Population; New Zealand: 2006 Census; Japan: Statistical Survey Department, Statistics Bureau, Ministry of Internal Affairs and Communications; for European countries: 2000 Round of Censuses of Population and Housing, Eurostat except for Belgium, Bulgaria, France, Luxembourg, Malta and Turkey: ELFS, 2007; and, United States: US Census 2000.

# Asia's "Flight From Marriage"(I):

Singulate Mean Age at Marriage, Selected Asian Countries  
1970-2005

| COUNTRY                 | 1970  | 1980   | 1990 | 2000  | 2005 |
|-------------------------|-------|--------|------|-------|------|
| <b>WOMEN</b>            |       |        |      |       |      |
| <b>East and SE Asia</b> |       |        |      |       |      |
| Japan                   | 24.7  | 25.1   | 26.9 | 28.6  | 29.4 |
| Korea                   | 23.3  | 24.1   | 25.5 | 27.1  | 28.8 |
| Taiwan                  | 22.6  | 23.9   | 26.0 | 27.6  |      |
| China                   |       | 22.4   | 22.1 | 23.3  | 23.6 |
| Hong Kong               | 23.8  | 25.3   | 28.0 | 29.6  | 30.3 |
| Thailand                | 22.0  | 22.8   | 23.5 | 24.1  |      |
| Singapore               | 24.2  | 26.2   | 27.0 | 26.5  | 26.9 |
| Malaysia                | 22.1  | 23.5   | 24.6 | 24.9  |      |
| Indonesia               | 19.3  | 20.0   | 21.6 | 22.7  | 23.4 |
| Philippines             | 22.8  | 22.4   | 23.8 |       |      |
| Myanmar                 | 21.3  | 22.4   | 24.5 | 25.8  |      |
| <b>South Asia</b>       |       |        |      |       |      |
| India                   | 17.7  | 18.7   | 19.3 | 20.2  |      |
| Pakistan                | 19.7  | 20.2   | 21.7 |       | 23.2 |
| Bangladesh              | 16.8* | 16.9** | 18.1 | 18.7  | 18.7 |
| Sri Lanka               | 23.5  | 24.4   |      |       |      |
| Iran                    |       | 19.7   | 19.8 | 22.4  | 23.3 |
| <b>MEN</b>              |       |        |      |       |      |
| <b>East and SE Asia</b> |       |        |      |       |      |
| Japan                   | 27.5  | 28.7   | 30.4 | 30.8  | 31.1 |
| Korea                   | 27.2  | 27.3   | 28.5 | 30.3  | 32.0 |
| Taiwan                  | 24.6  | 25.3   | 28.8 | 30.5  |      |
| China                   |       | 25.1   | 23.8 | 25.1  | 25.7 |
| Hong Kong               | 30.2  | 28.7   | 29.8 | 31.9  | 33.0 |
| Thailand                | 24.7  | 24.9   | 26.0 | 27.4  |      |
| Singapore               | 27.8  | 28.4   | 29.9 | 30.0  | 30.1 |
| Malaysia                | 25.6  | 26.6   | 27.9 | 28.5  |      |
| Indonesia               | 23.8  | 24.1   | 25.2 | 25.9  | 27.0 |
| Philippines             |       |        | 26.3 |       |      |
| Myanmar                 | 23.9  | 24.6   | 26.3 | 27.6  |      |
| <b>South Asia</b>       |       |        |      |       |      |
| India                   | 22.7  | 23.4   | 23.9 | 24.8  |      |
| Pakistan                | 25.7  | 25.1   | 26.5 |       |      |
| Bangladesh              |       | 23.9   | 25.0 | 27.6* |      |
| Sri Lanka               | 28.0  | 27.9   |      |       |      |
| Iran                    |       |        |      |       |      |

Notes: For India, years are 1971, 1981, 1991, 2001. For Iran, years are 1976, 1986, 1996, 2006, for Pakistan 1972, 1981, 1991, 2007. \*1975 \*\*1983

# Asia's "Flight From Marriage" (II): Increases in Percentages of Never-married Women in Selected Asian Populations, 1970 – 2000, Age Groups 30-34 and 40-44

Source: G.W. Jones, 2004, Appendix table 1.

| Population        | 30-34 |      | 40-44 |      |
|-------------------|-------|------|-------|------|
|                   | 1970  | 2000 | 1970  | 2000 |
| Japan             | 7.2   | 26.6 | 5.3   | 8.6  |
| Myanmar           | 9.3   | 25.9 | 6.2   | 14.8 |
| Thailand          | 8.1   | 16.1 | 3.9   | 9.3  |
| Singapore Chinese | 11.1  | 21.6 | 3.6   | 15.0 |
| Singapore Malays  | 3.9   | 12.2 | 1.7   | 8.2  |
| Malaysia Chinese  | 9.5   | 18.2 | 3.4   | 8.4  |
| Malaysia Malays   | 3.3   | 9.7  | 1.1   | 4.4  |
| Philippines       | 8.9   | 14.8 | 6.0   | 7.1  |
| South Korea       | 1.4   | 10.7 | 0.2   | 2.6  |
| Indonesia         | 2.2   | 6.9  | 1.2   | 2.4  |

**Japan--Woman's Life Time Probabilities and Distributions by Family Status:  
Cohorts Born in 1950-90 (Estimated and Projected)**

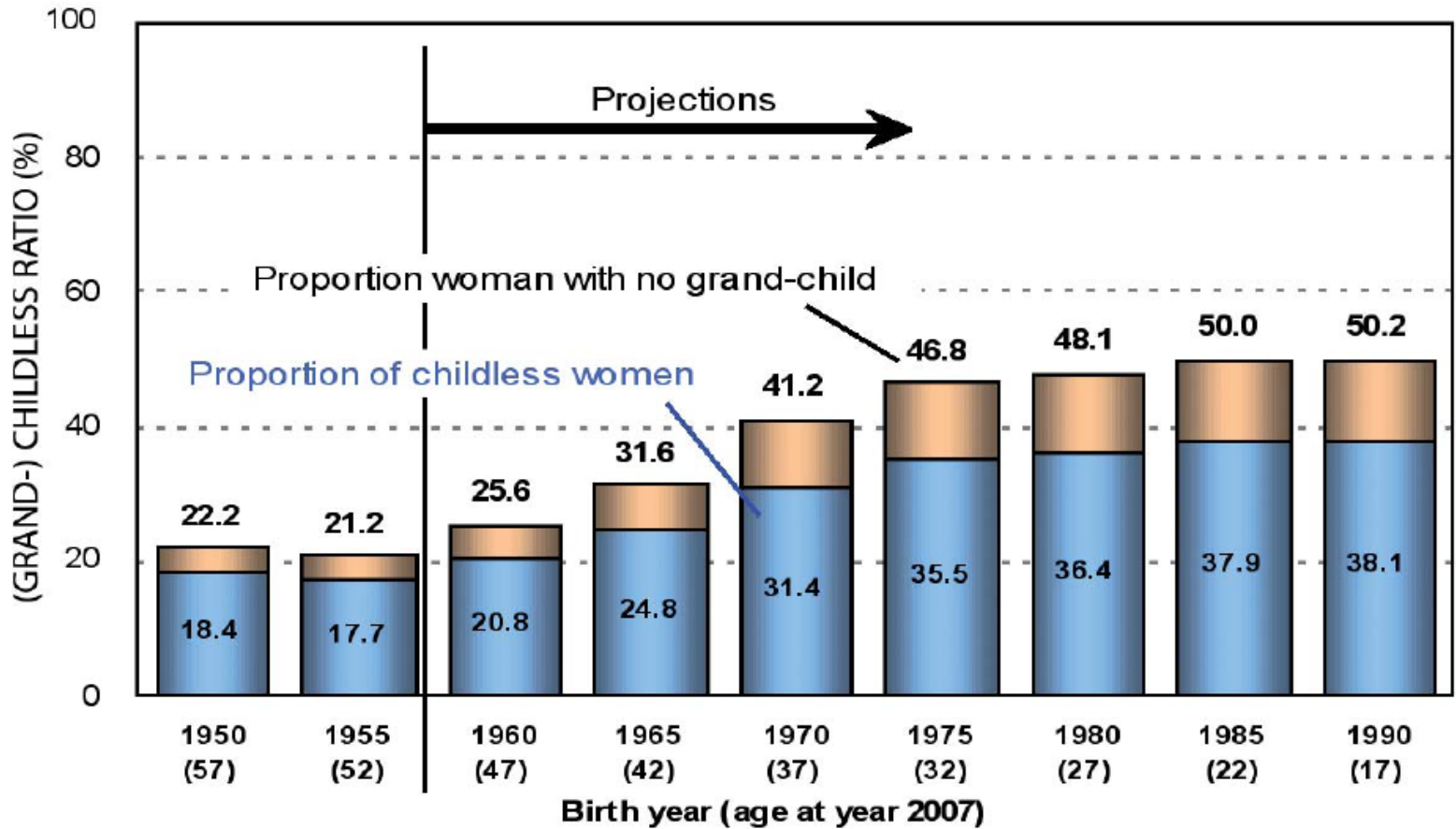
(%)

|  | Birth year of woman's cohort |      |           |      |      |      |      |      |      |
|--|------------------------------|------|-----------|------|------|------|------|------|------|
|  | Recorded                     |      | Projected |      |      |      |      |      |      |
|  | 1950                         | 1955 | 1960      | 1965 | 1970 | 1975 | 1980 | 1985 | 1990 |
| <b>Life time probability of woman ... ( at birth )</b>   |                              |      |           |      |      |      |      |      |      |
| Marrying   | 86.4                         | 88.8 | 87.1      | 85.6 | 82.1 | 78.3 | 76.4 | 75.7 | 75.7 |
| Having 1st birth   | 81.6                         | 82.3 | 79.2      | 75.2 | 68.6 | 64.5 | 63.6 | 62.1 | 61.9 |
| Having 2nd birth   | 70.4                         | 71.1 | 65.8      | 58.6 | 49.8 | 45.7 | 44.8 | 43.9 | 43.9 |
| Having 3rd birth   | 23.6                         | 26.7 | 24.1      | 19.1 | 14.7 | 12.8 | 11.7 | 11.3 | 11.2 |
| Having 4th and higher birth  | 4.2                          | 4.7  | 4.5       | 3.8  | 3.2  | 2.7  | 2.3  | 2.0  | 1.9  |
| Never marrying   | 13.6                         | 11.2 | 12.9      | 14.4 | 17.9 | 21.7 | 23.6 | 24.3 | 24.3 |
| Childless  | 18.4                         | 17.7 | 20.8      | 24.8 | 31.4 | 35.5 | 36.4 | 37.9 | 38.1 |
| Never having 2nd child   | 29.6                         | 28.9 | 34.2      | 41.4 | 50.2 | 54.3 | 55.2 | 56.1 | 56.1 |
| Never having 3rd child   | 76.4                         | 73.3 | 75.9      | 80.9 | 85.3 | 87.2 | 88.3 | 88.7 | 88.8 |
| Never having 4th child   | 95.8                         | 95.3 | 95.5      | 96.2 | 96.8 | 97.3 | 97.7 | 98.0 | 98.1 |
| <b>Life time distribution of woman by number of child ( at birth )</b>   |                              |      |           |      |      |      |      |      |      |
| Childless  | 18.4                         | 17.7 | 20.8      | 24.8 | 31.4 | 35.5 | 36.4 | 37.9 | 38.1 |
| Never married  | 13.6                         | 11.2 | 12.9      | 14.4 | 17.9 | 21.7 | 23.6 | 24.3 | 24.3 |
| Ever married   | 4.8                          | 6.5  | 7.9       | 10.5 | 13.5 | 13.8 | 12.8 | 13.6 | 13.8 |
| Only child   | 11.2                         | 11.2 | 13.3      | 16.5 | 18.7 | 18.8 | 18.8 | 18.1 | 18.0 |
| Two children   | 46.8                         | 44.4 | 41.8      | 39.5 | 35.2 | 32.9 | 33.0 | 32.6 | 32.8 |
| Three children   | 19.4                         | 22.0 | 19.6      | 15.3 | 11.5 | 10.1 | 9.4  | 9.3  | 9.3  |
| Four and more children   | 4.2                          | 4.7  | 4.5       | 3.8  | 3.2  | 2.7  | 2.3  | 2.0  | 1.9  |
| Net Reproduction Rate  | 87.5                         | 90.0 | 84.5      | 76.3 | 66.3 | 61.2 | 59.6 | 58.1 | 57.9 |
| No grandchild  | 22.2                         | 21.2 | 25.6      | 31.6 | 41.2 | 46.8 | 48.1 | 50.0 | 50.2 |
| <b>Life time proportion of woman ( without mortality effect = directly derived from fertility assumption )</b> |                              |      |           |      |      |      |      |      |      |
| Never married  | 5.0                          | 5.8  | 9.3       | 12.0 | 16.2 | 20.4 | 22.6 | 23.5 | 23.5 |
| Childless  | 10.3                         | 12.7 | 17.5      | 22.7 | 30.0 | 32.8 | 35.7 | 37.1 | 37.4 |
| No grandchild  | 12.1                         | 15.0 | 21.3      | 28.8 | 39.3 | 42.9 | 46.8 | 48.9 | 49.4 |

*Source:* From the projection 2006, medium-fertility and medium-mortality variant. The life time proportions of woman never married and childless (without mortality effect) are officially provided numbers. Other numbers are calculated by the author from the assumption. The sex ratio at birth for the net reproduction ratio is an officially provided assumption and is 105.4 (fixed value from average over year 2001-05).

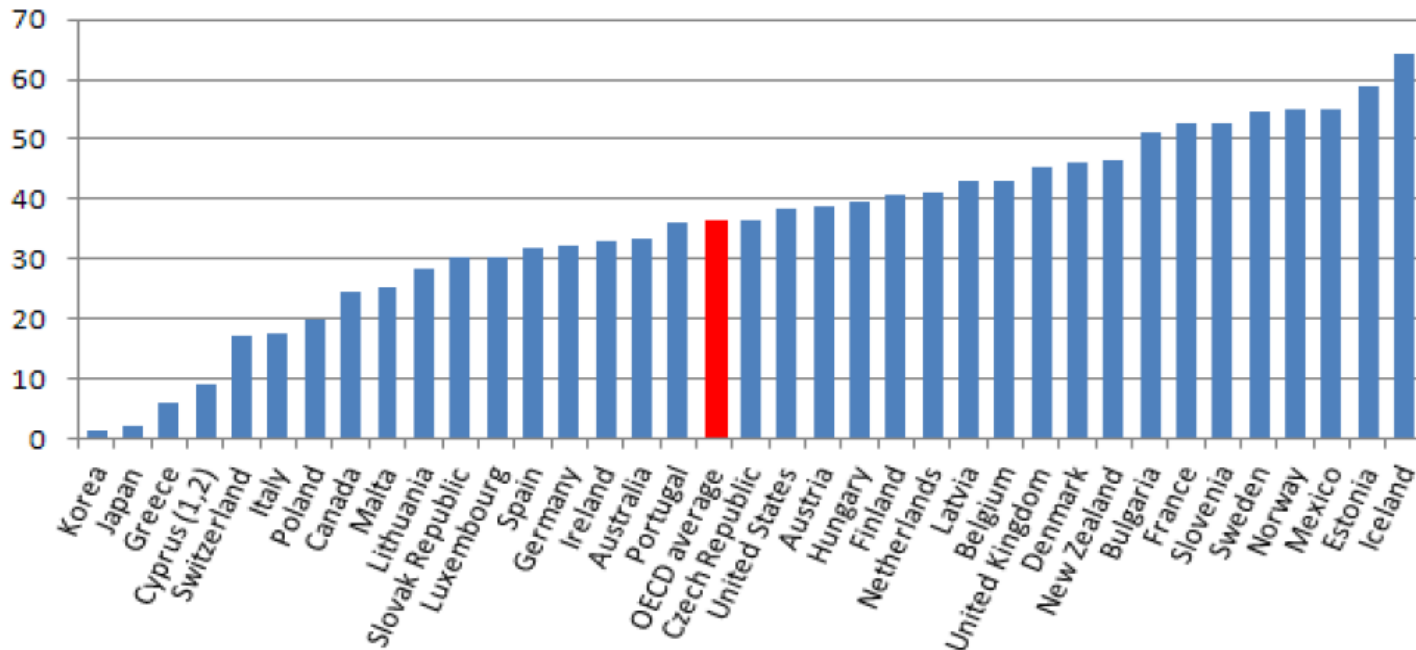
# Japan: Childless and Non-grandchild Ratio among Women

## Medium Projections, Cohorts born 1935-1990



Source: From the projection 2006, medium-fertility and medium-mortality variant. Proportions are calculated by the author from the assumption of the projection 2006, medium-fertility and medium-mortality variant.

# Proportion of Births out of Wedlock: OECD Countries, 2009



Countries are ranked in ascending order of the proportion of births out-of-wedlock in 2009.

Note: \* Data refers to 2007 for Japan, Italy, Ireland, Australia, the United States, Belgium and New Zealand; 2006 for Korea; 2005 for Canada.

1 Footnote by Turkey: The information in this document with reference to "Cyprus" relates to the southern part of the Island. There is no single authority representing both Turkish and Greek Cypriot people on the Island. Turkey recognizes the Turkish Republic of Northern Cyprus (TRNC). Until a lasting and equitable solution is found within the context of United Nations, Turkey shall preserve its position concerning the "Cyprus issue".

2 Footnote by all the European Union Member States of the OECD and the European Commission: The Republic of Cyprus is recognized by all members of the United Nations with the exception of Turkey. The information in this document relates to the area under the effective control of the Government of the Republic of Cyprus.

Source: Eurostat, 2012, United Nations Statistical Division, 2011, and National Statistical Offices, 2011.



## Percentages of Japanese Men and Women reporting ever having cohabited: GGS Survey 2004

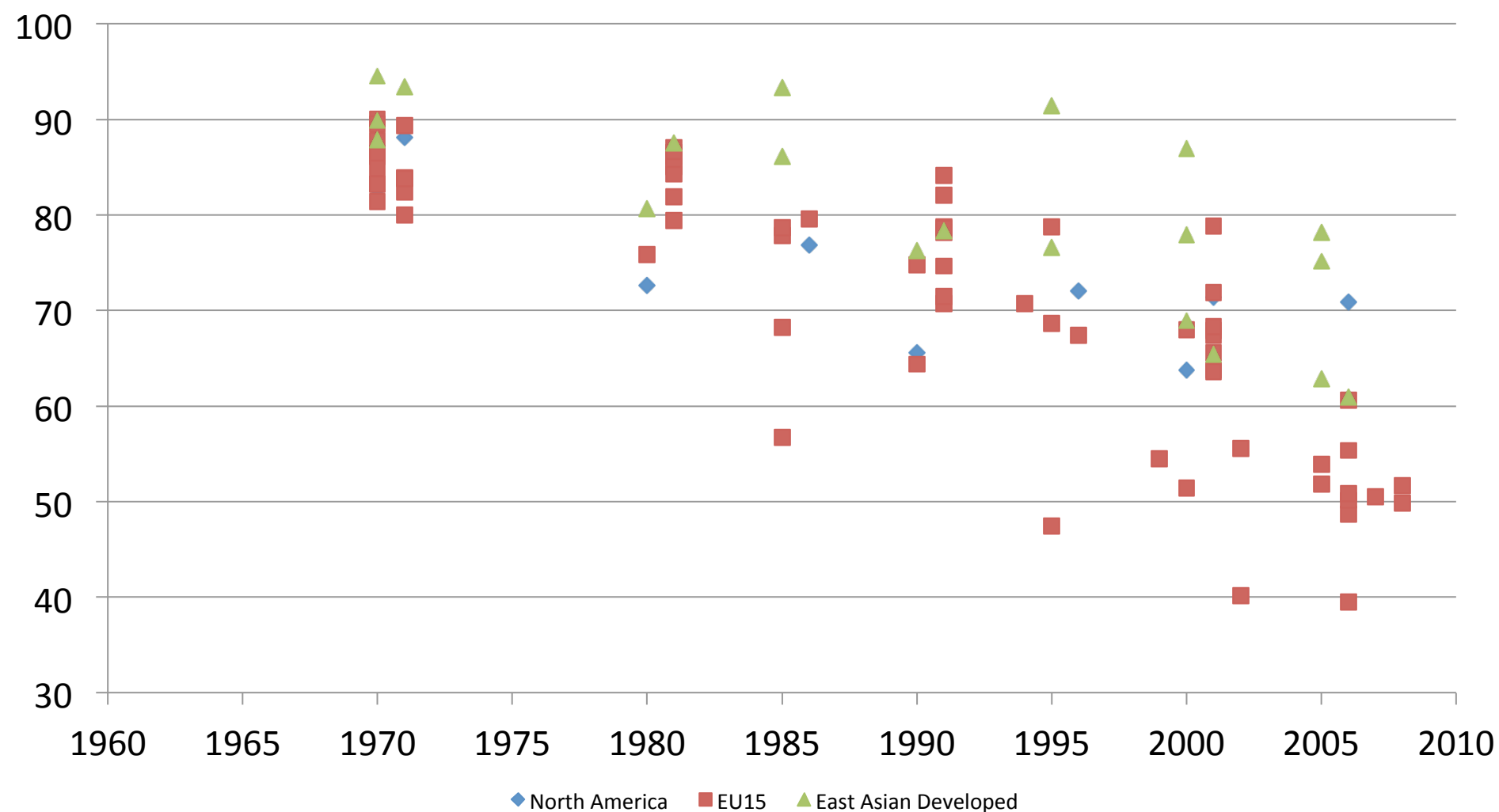
Source: N. Tsuya, 2006, Table 1.

| Age   | Women |         | Men  |         | Both sexes |         |
|-------|-------|---------|------|---------|------------|---------|
|       | %     | (N)     | %    | (N)     | %          | (N)     |
| 20-24 | 11.7  | (322)   | 11.0 | (243)   | 11.4       | (565)   |
| 25-29 | 20.2  | (352)   | 20.6 | (289)   | 20.4       | (641)   |
| 30-34 | 16.5  | (345)   | 20.6 | (296)   | 18.6       | (641)   |
| 35-39 | 15.7  | (602)   | 15.9 | (472)   | 15.8       | (1,074) |
| 40-44 | 11.5  | (456)   | 15.5 | (400)   | 13.5       | (856)   |
| 45-49 | 7.5   | (504)   | 10.7 | (418)   | 9.1        | (922)   |
| 50-54 | 7.0   | (558)   | 12.1 | (523)   | 9.5        | (1,081) |
| 55-59 | 5.4   | (527)   | 8.3  | (492)   | 6.9        | (1,019) |
| 60-64 | 4.4   | (535)   | 9.5  | (498)   | 6.9        | (1,033) |
| 65-69 | 2.1   | (425)   | 5.0  | (489)   | 3.7        | (914)   |
| Total | 10.0  | (4,626) | 12.6 | (4,120) | 14.6       | (8,746) |

*Notes* : Percentages are computed, using sample and response rate weights.

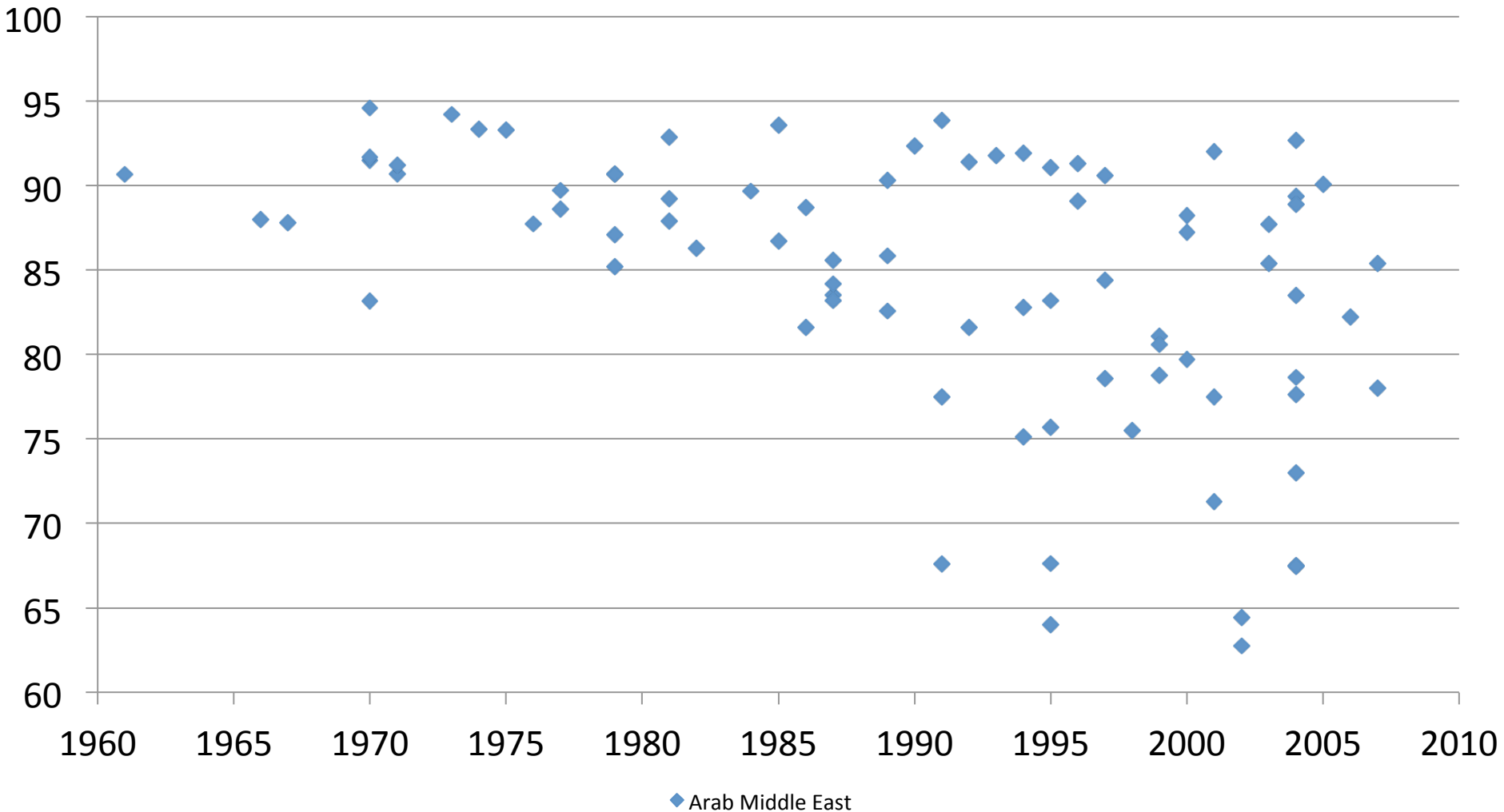
# Percentage of Women Currently Married Ages 30-34

## North America, EU15, East Asian Developed, 1960-2010



# Percentage of Women Currently Married Ages 30-34

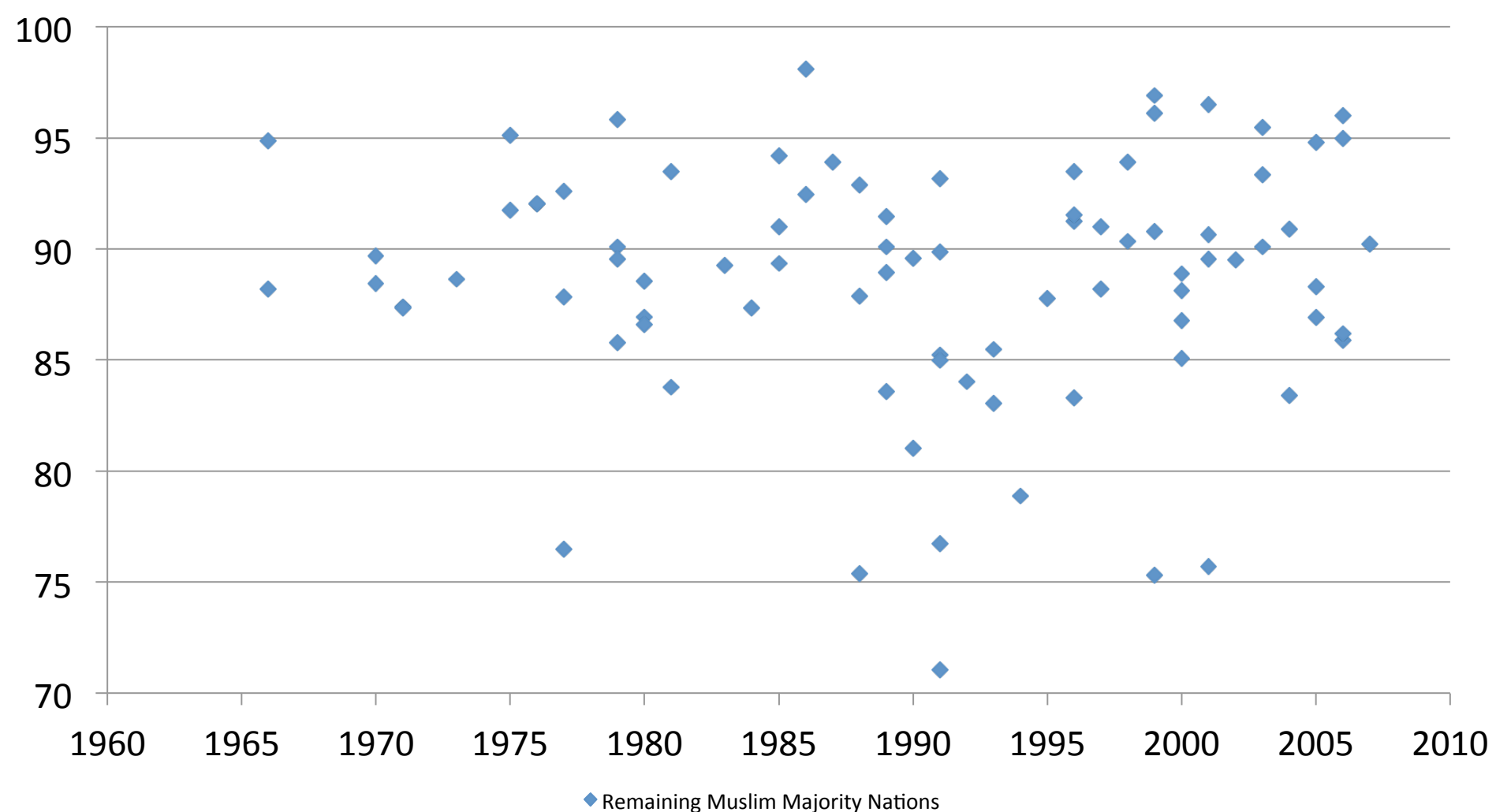
## Arabic Middle East, 1960-2010



◆ Arab Middle East

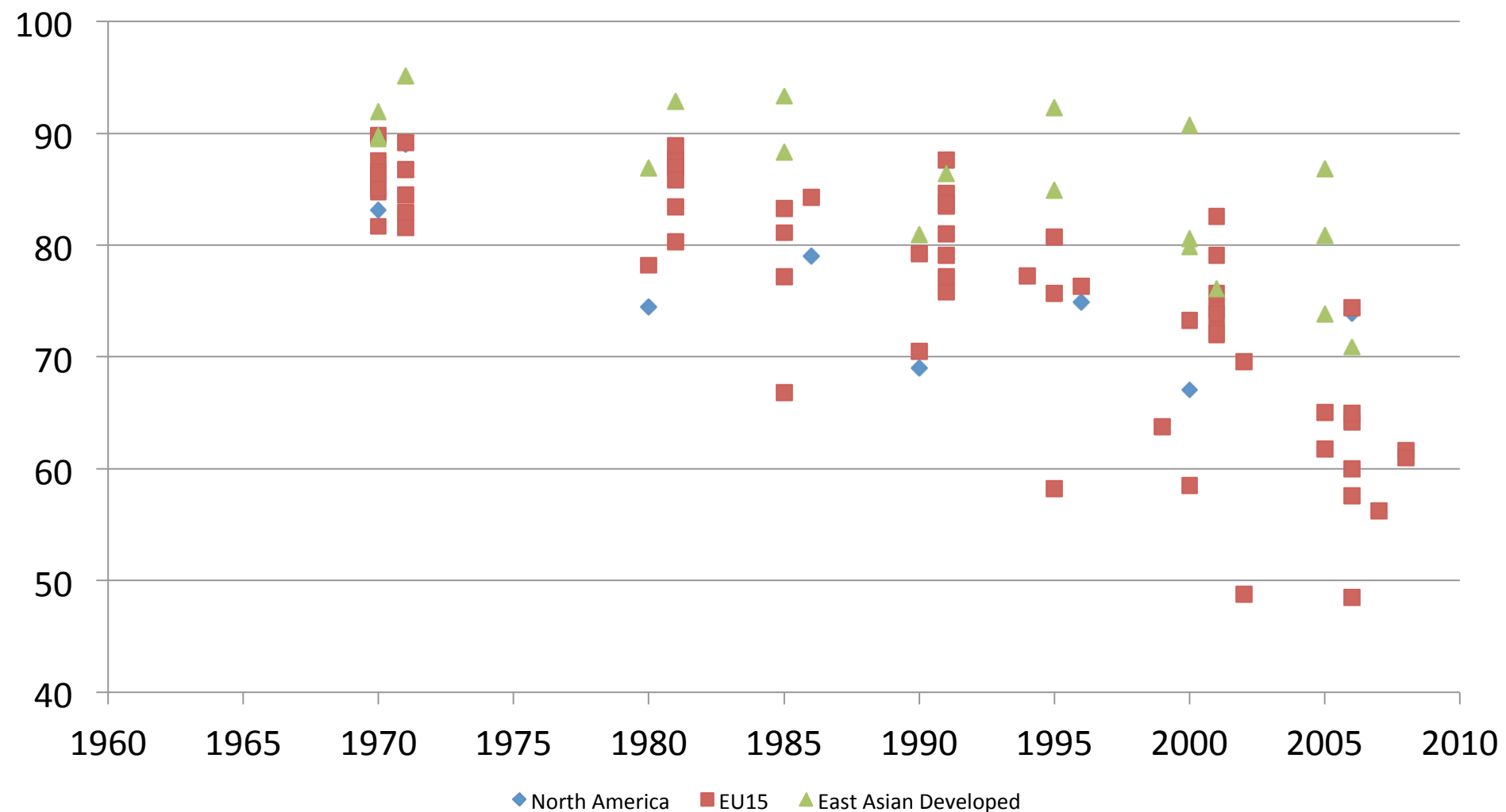
# Percentage of Women Currently Married Ages 30-34

## Non-Arab Muslim Majority Societies, 1960-2010



# Percentage of Women Currently Married Ages 35-39

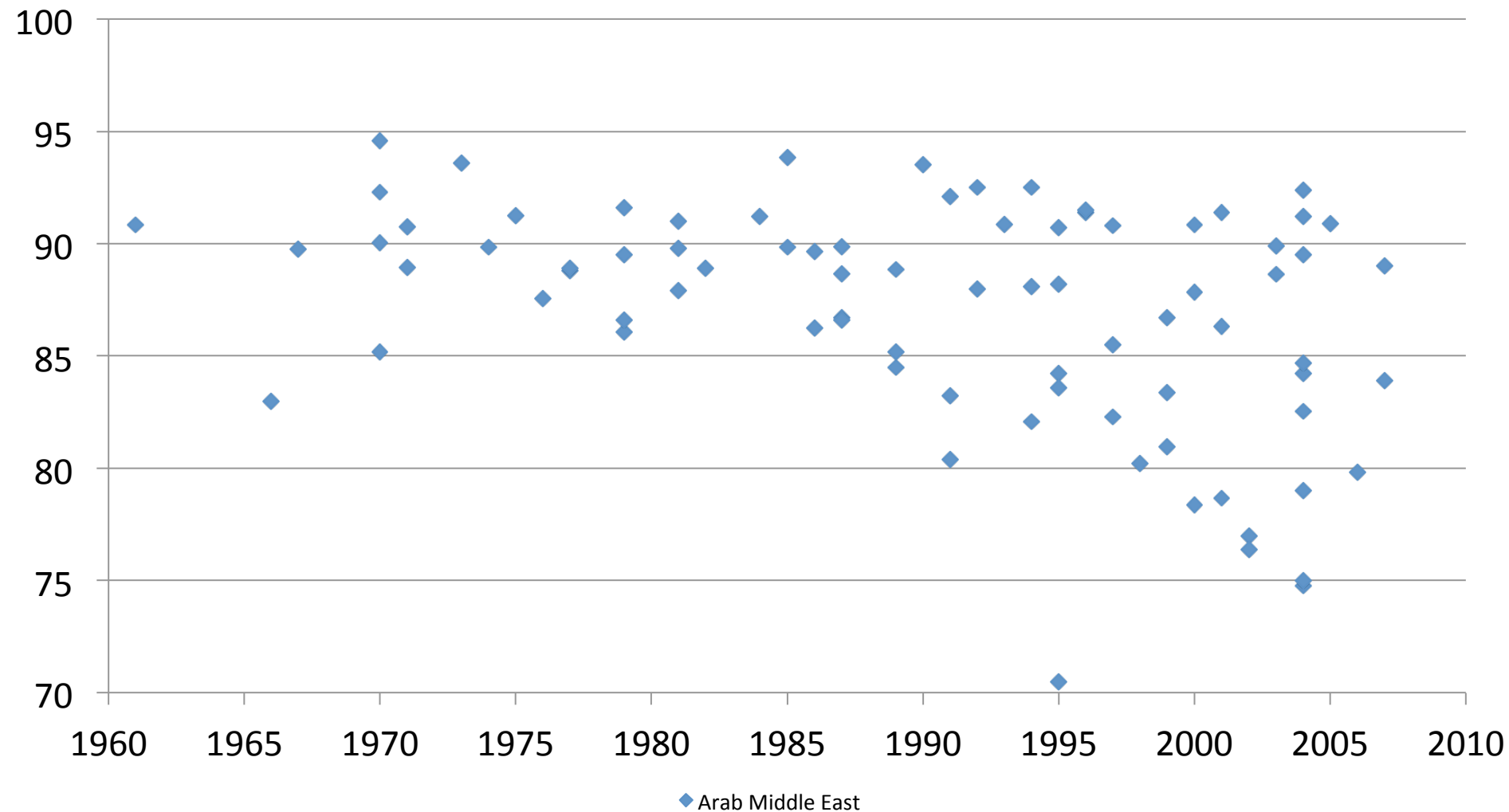
## North America, EU15, East Asian Developed Societies, 1960-2010



United Nations, Department of Economic and Social Affairs, Population Division (2009). *World Marriage Data 2008*. Tables: Currently Married Women and Men (POP/DB/Marr/Rev2008). [http://www.un.org/esa/population/publications/WMD2008/WP\\_WMD\\_2008/Data.html](http://www.un.org/esa/population/publications/WMD2008/WP_WMD_2008/Data.html) (Accessed: Jan 11, 2013)

# Percentage of Women Currently Married Ages 35-39

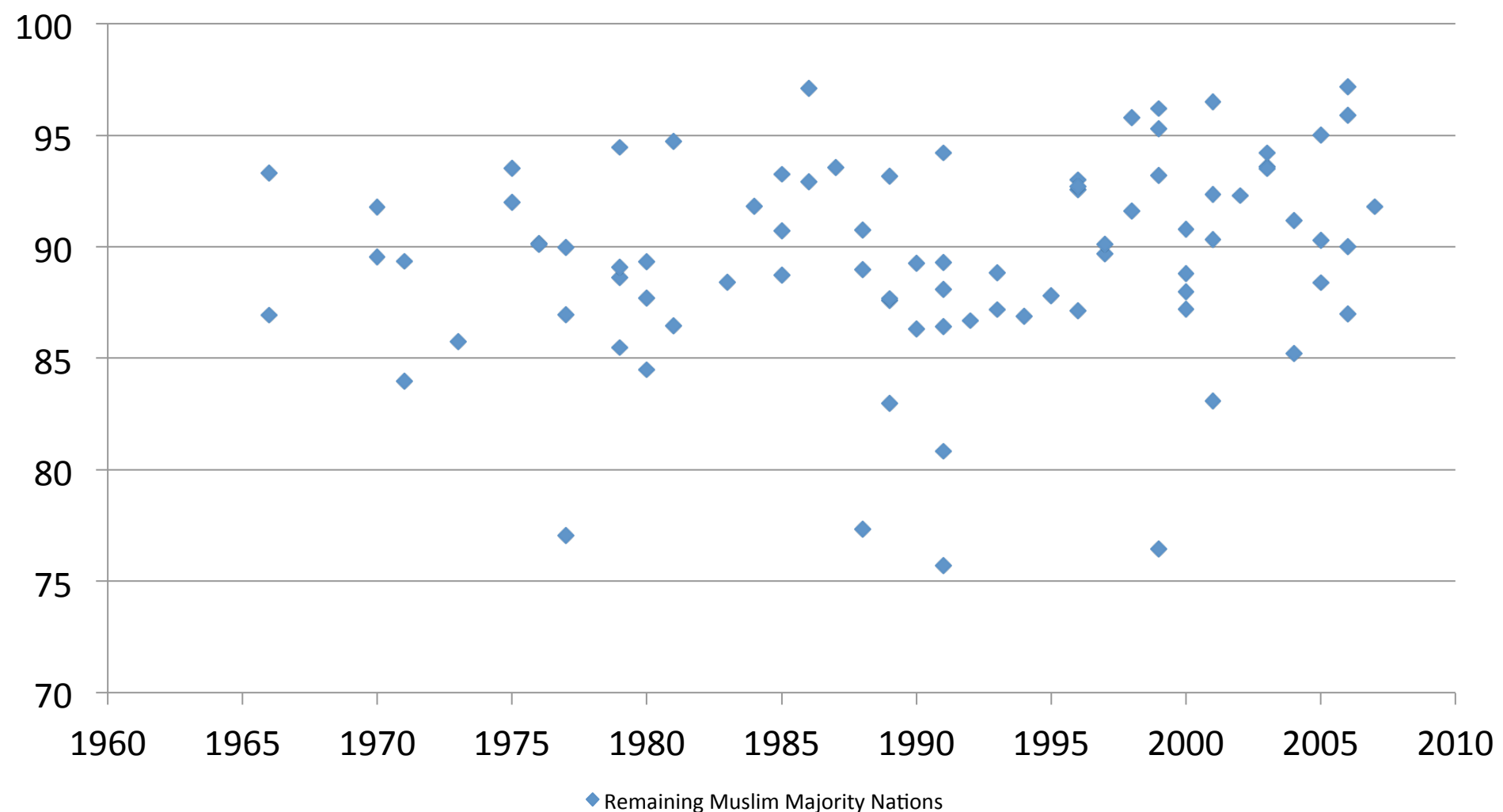
## Arabic Middle East, 1960-2010



◆ Arab Middle East

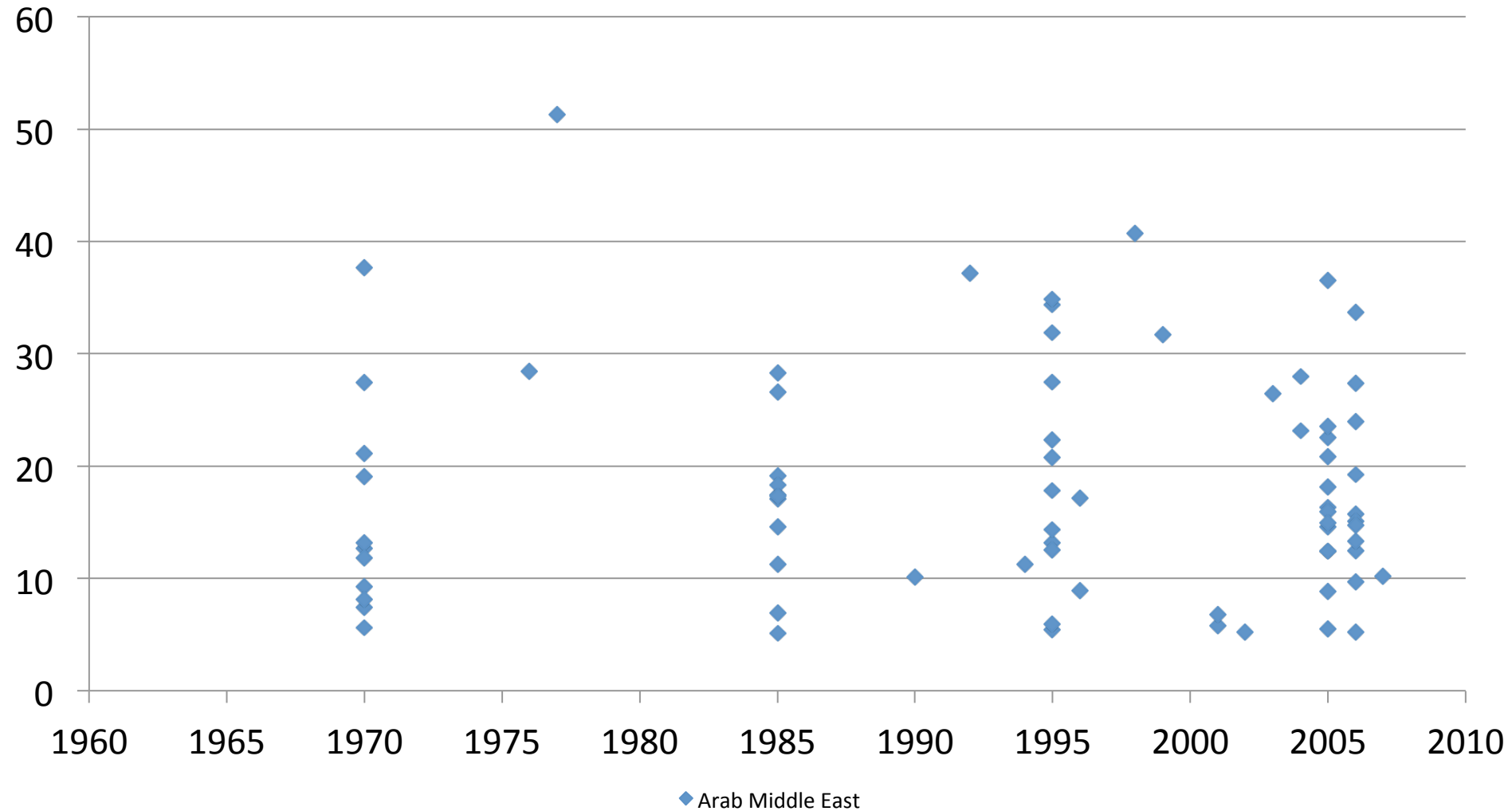
# Percentage of Women Who are Currently Married Ages 35-39

## Non-Arab Muslim Majority Societies, 1960-2010



# Divorces Per 100 Marriages

## Arabic Middle East

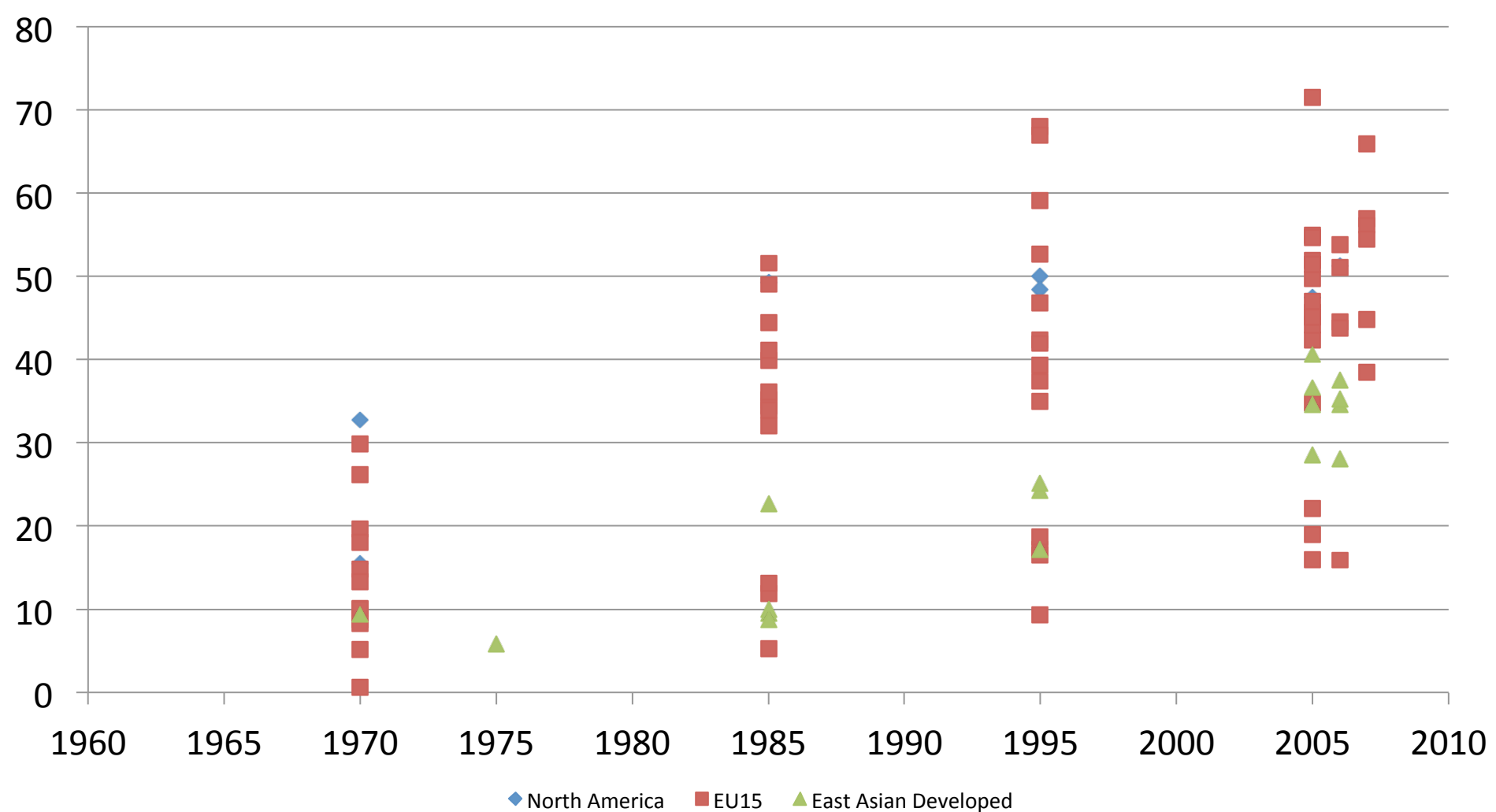


◆ Arab Middle East



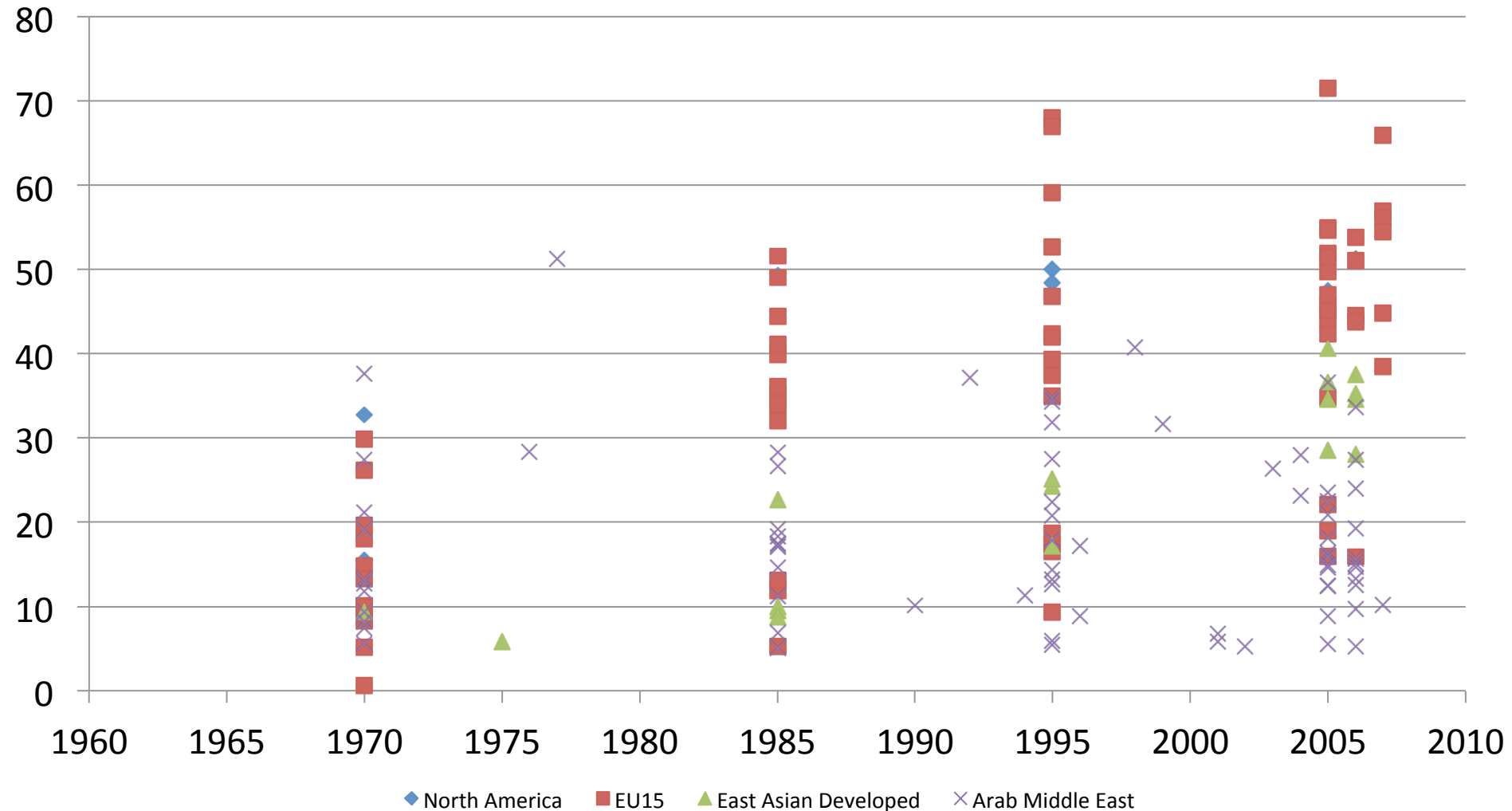
# Divorces Per 100 Marriages

## North America, EU15, East Asian Developed



# Divorces Per 100 Marriages

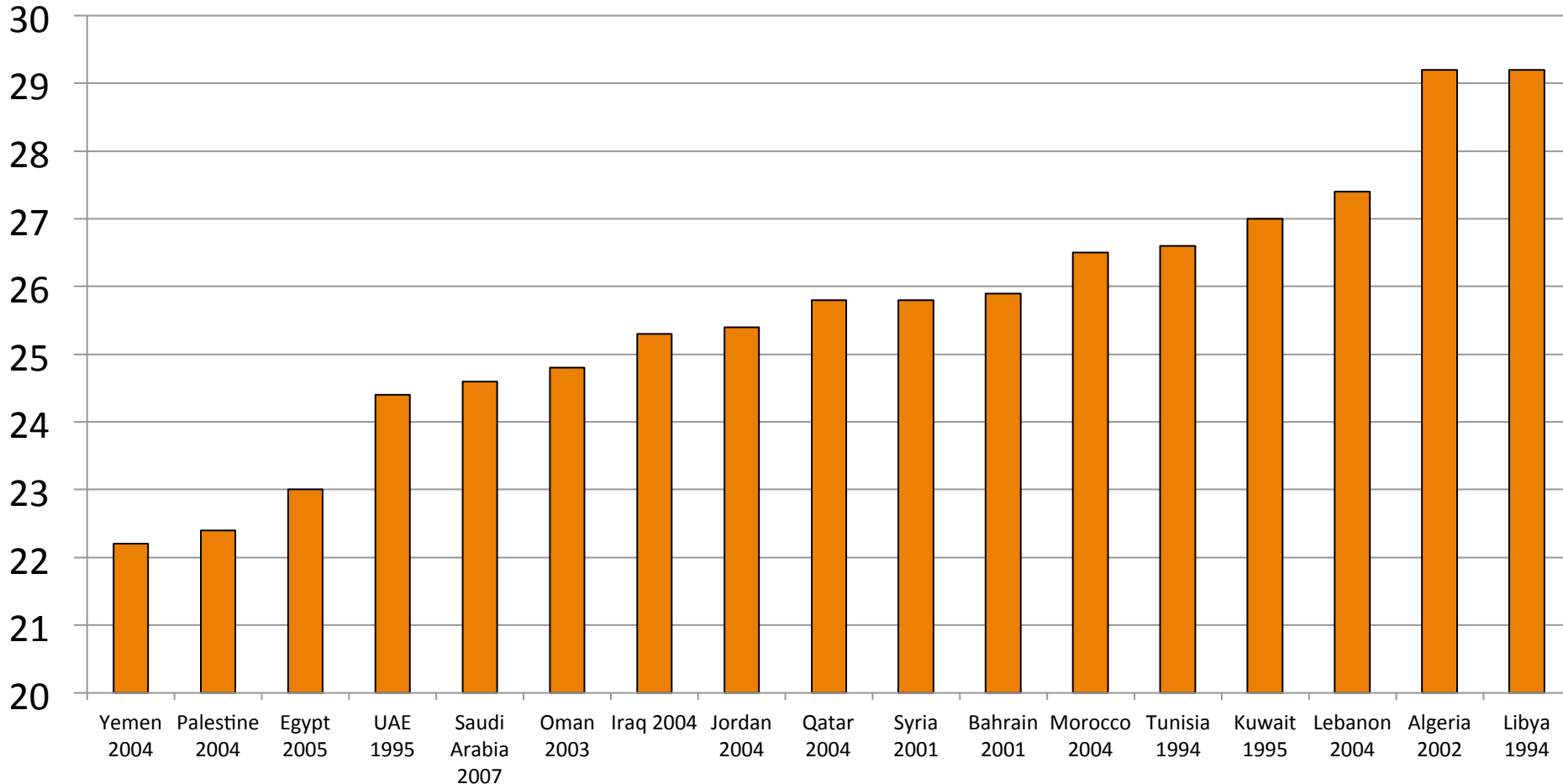
North America, EU15, East Asian Developed, Arabic Middle East



United Nations, Department of Economic and Social Affairs, Population Division (2009). *World Marriage Data 2008*. Tables: Crude Marriage Rate, Crude Divorce Rate (POP/DB/Marr/Rev2008). [http://www.un.org/esa/population/publications/WMD2008/WP\\_WMD\\_2008/Data.html](http://www.un.org/esa/population/publications/WMD2008/WP_WMD_2008/Data.html) (Accessed: Jan 11, 2013)

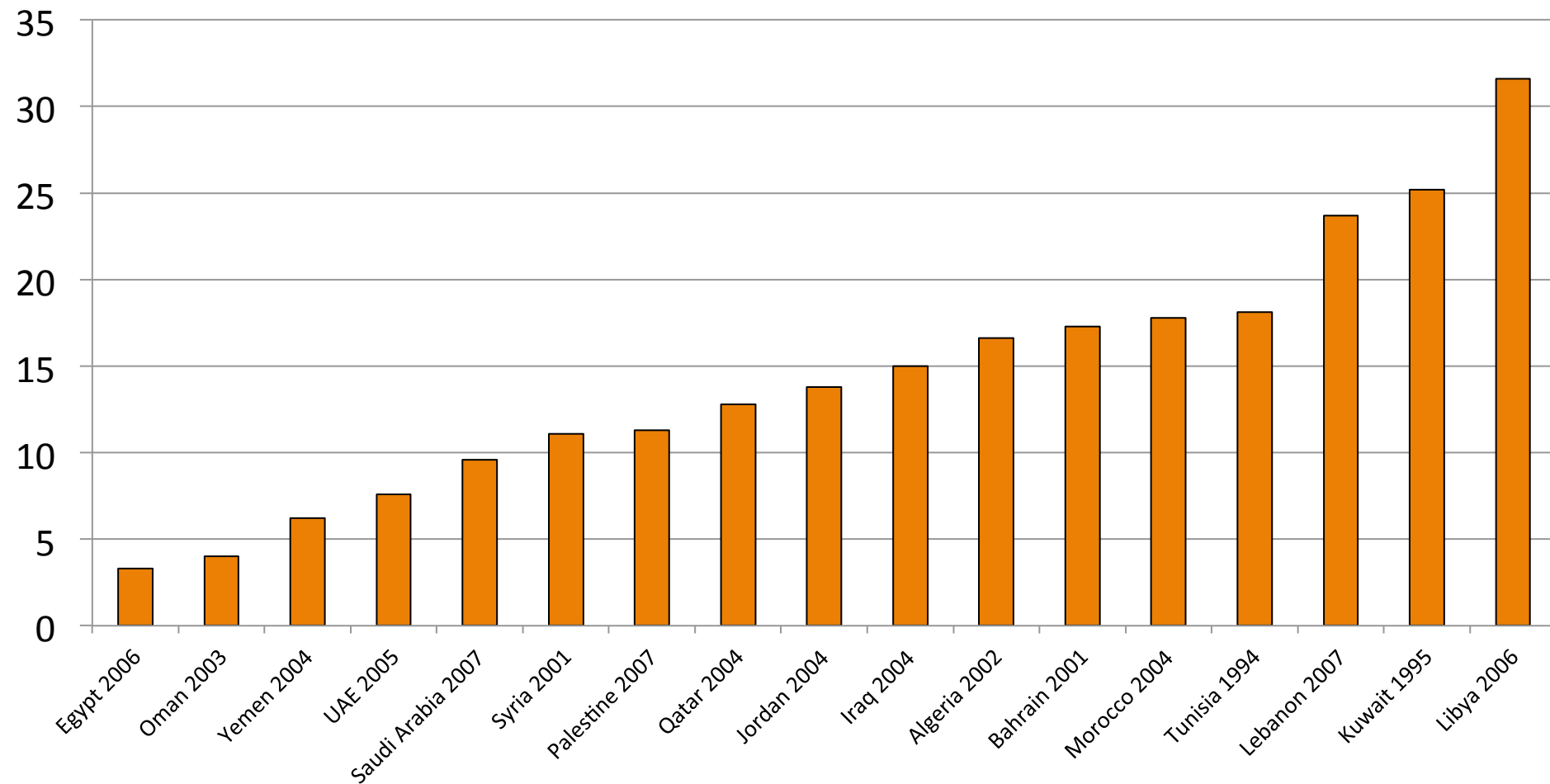
# Singulate Female Mean Age at Marriage (Years)

## Arabic Speaking World 2000s



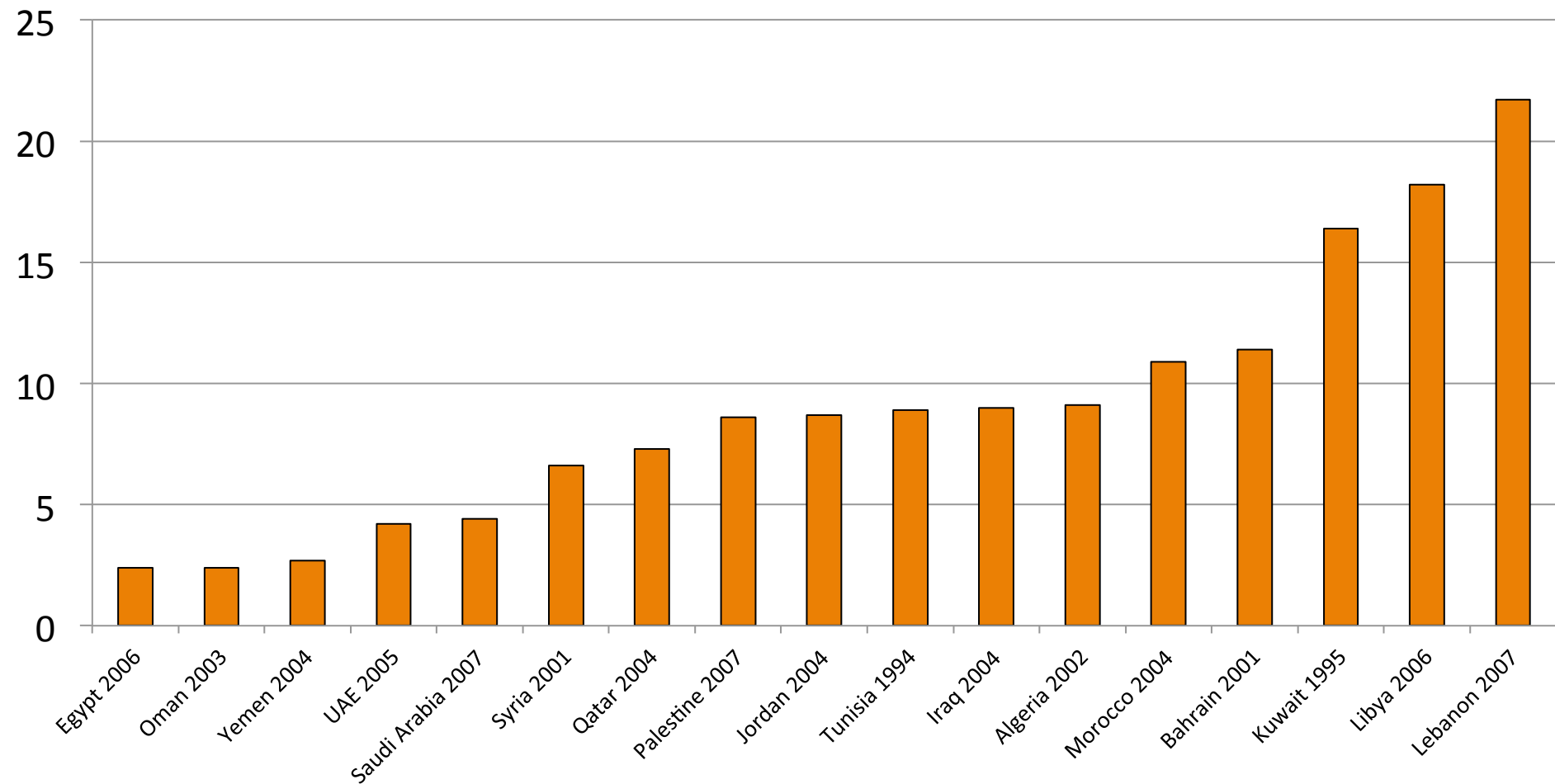
# Percentage Women Never Married Ages 35-39

## Arabic Speaking World 2000s



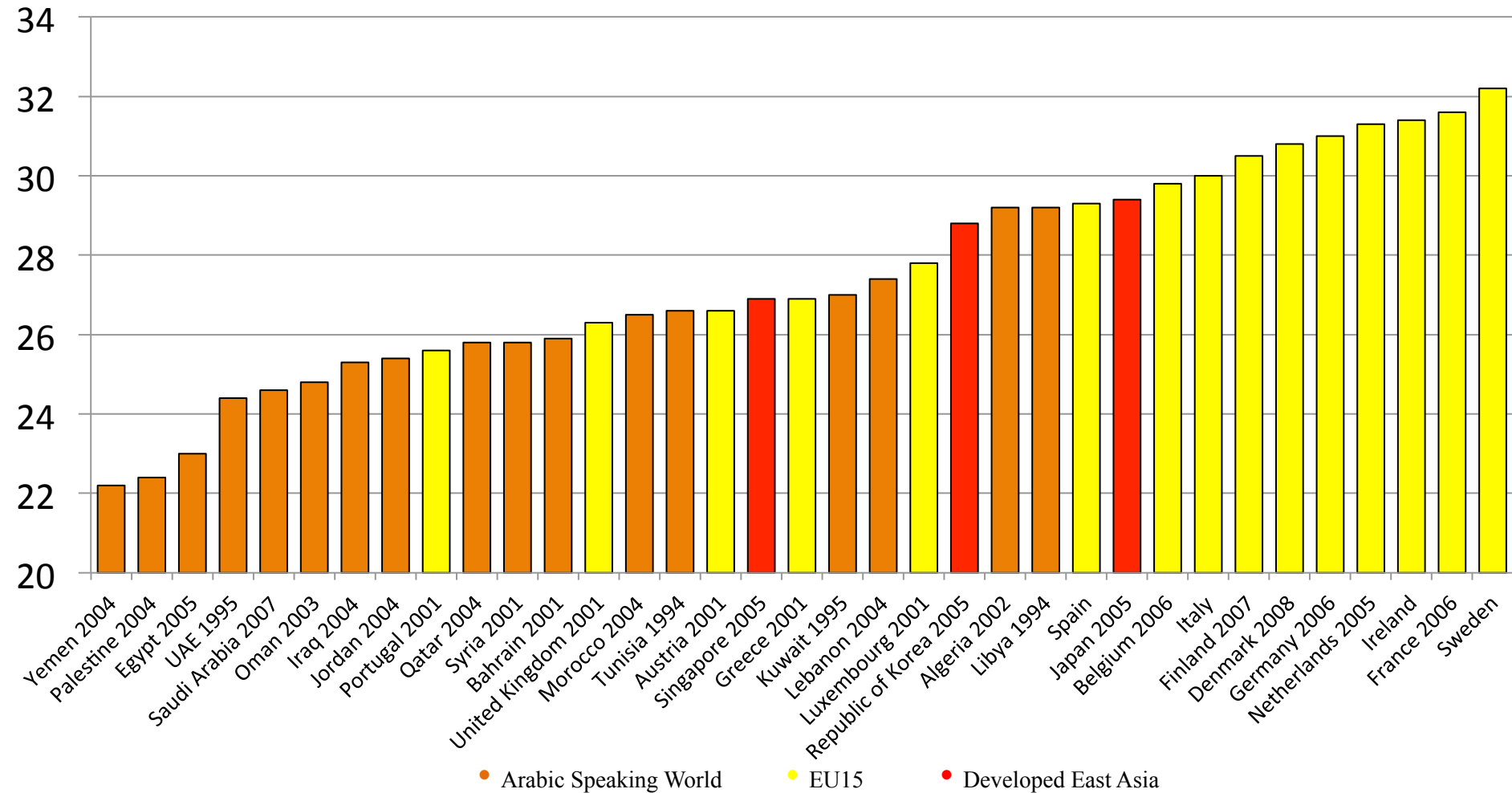
# Percentage Women Never Married Ages 40-44

## Arabic Speaking World 2000s



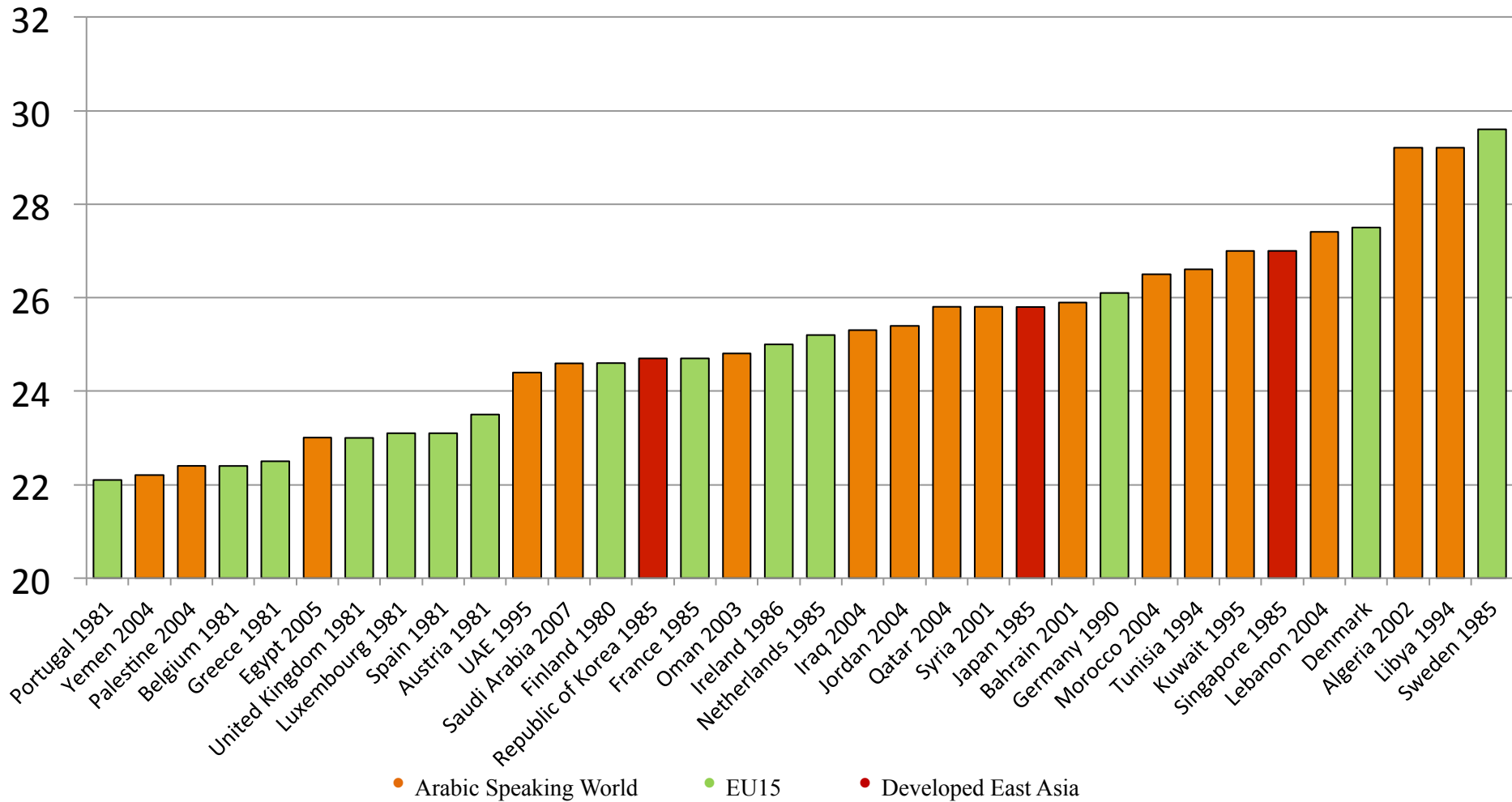
# Singulate Female Mean Age at Marriage (Years)

## Arabic Speaking World 2000s, EU15 2000s, Developed East Asia 2000s



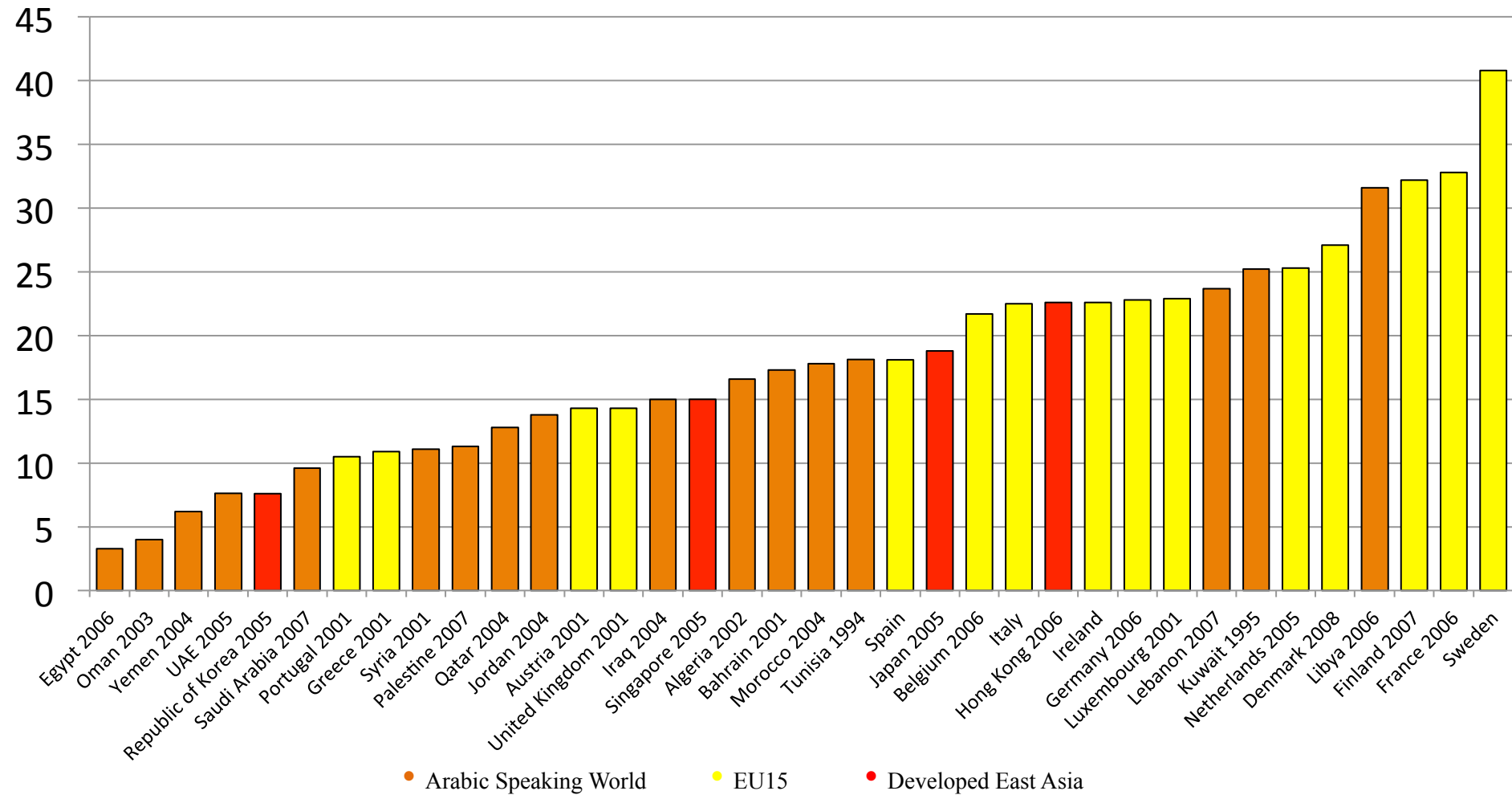
# Singulate Female Mean Age at Marriage (Years)

## Arabic Speaking World 2000s, EU15 1980s, Developed East Asia 1980s



# Percentage Women Never Married Ages 35-39

## Arabic Speaking World 2000s, EU15 2000s, Developed East Asia 2000s

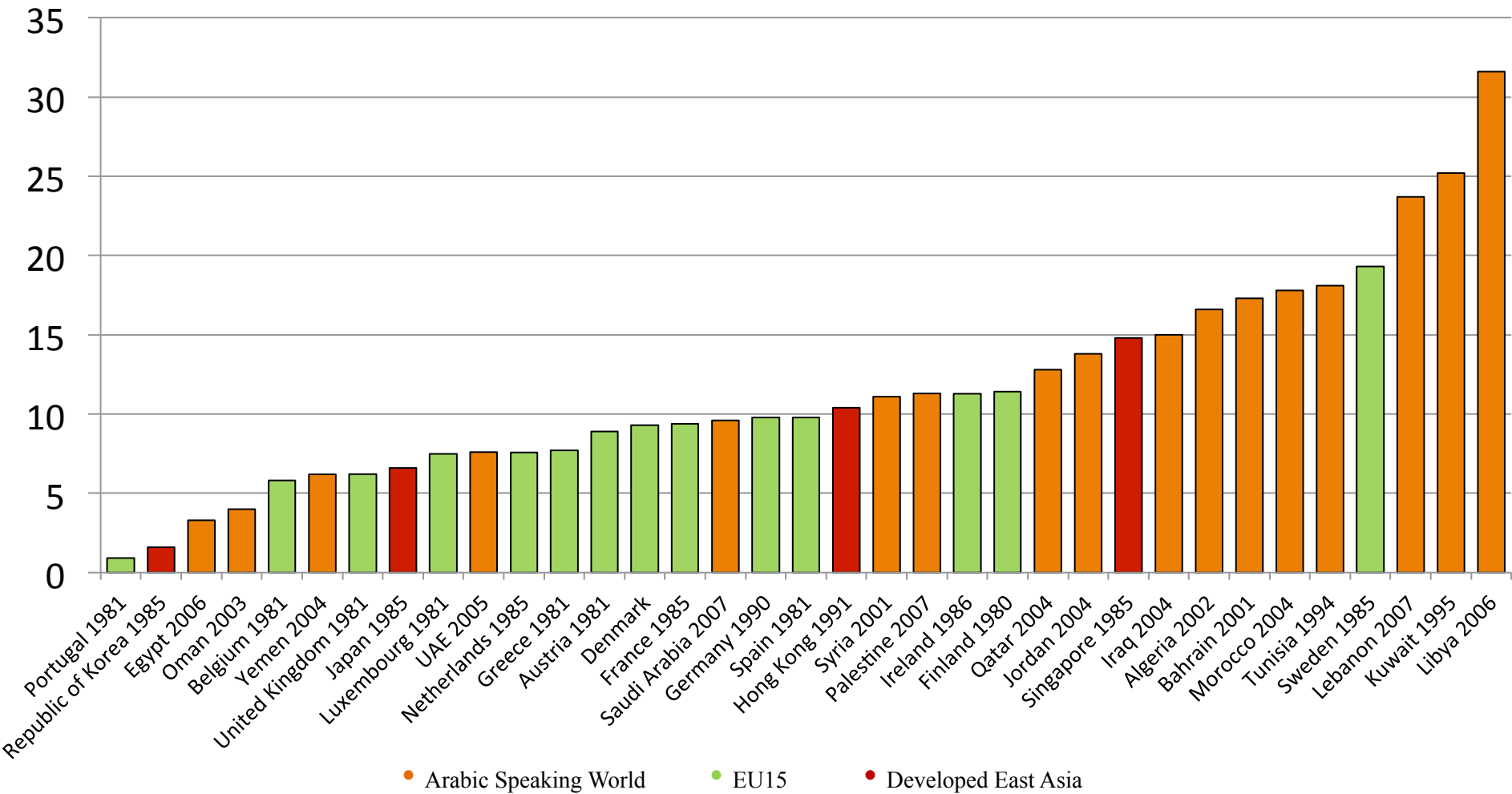


● Arabic Speaking World    ● EU15    ● Developed East Asia



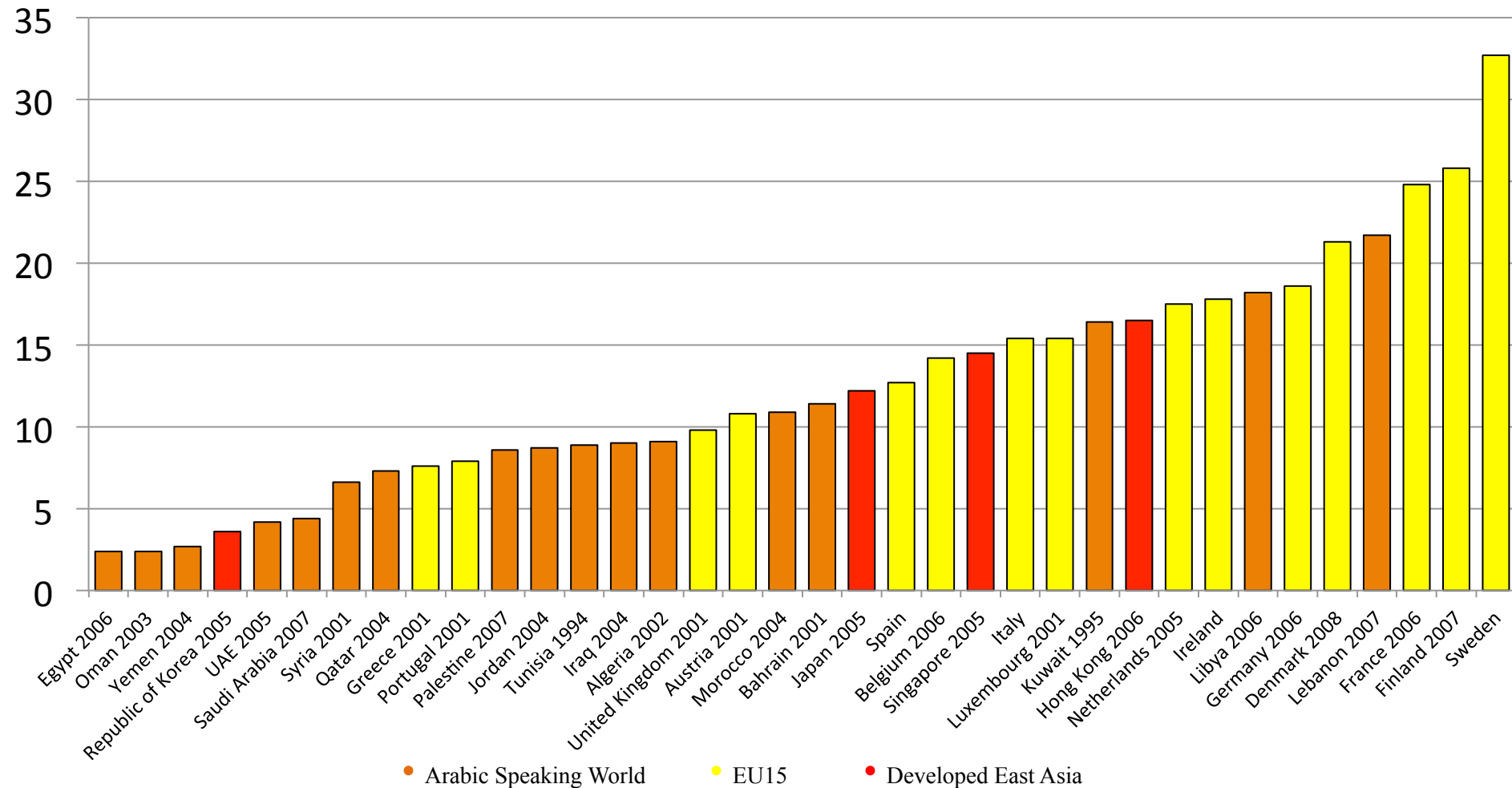
# Percentage Women Never Married Ages 35-39

## Arabic Speaking World 2000s, EU15 1980s, Developed East Asia 1980s



# Percentage Women Never Married Ages 40-44

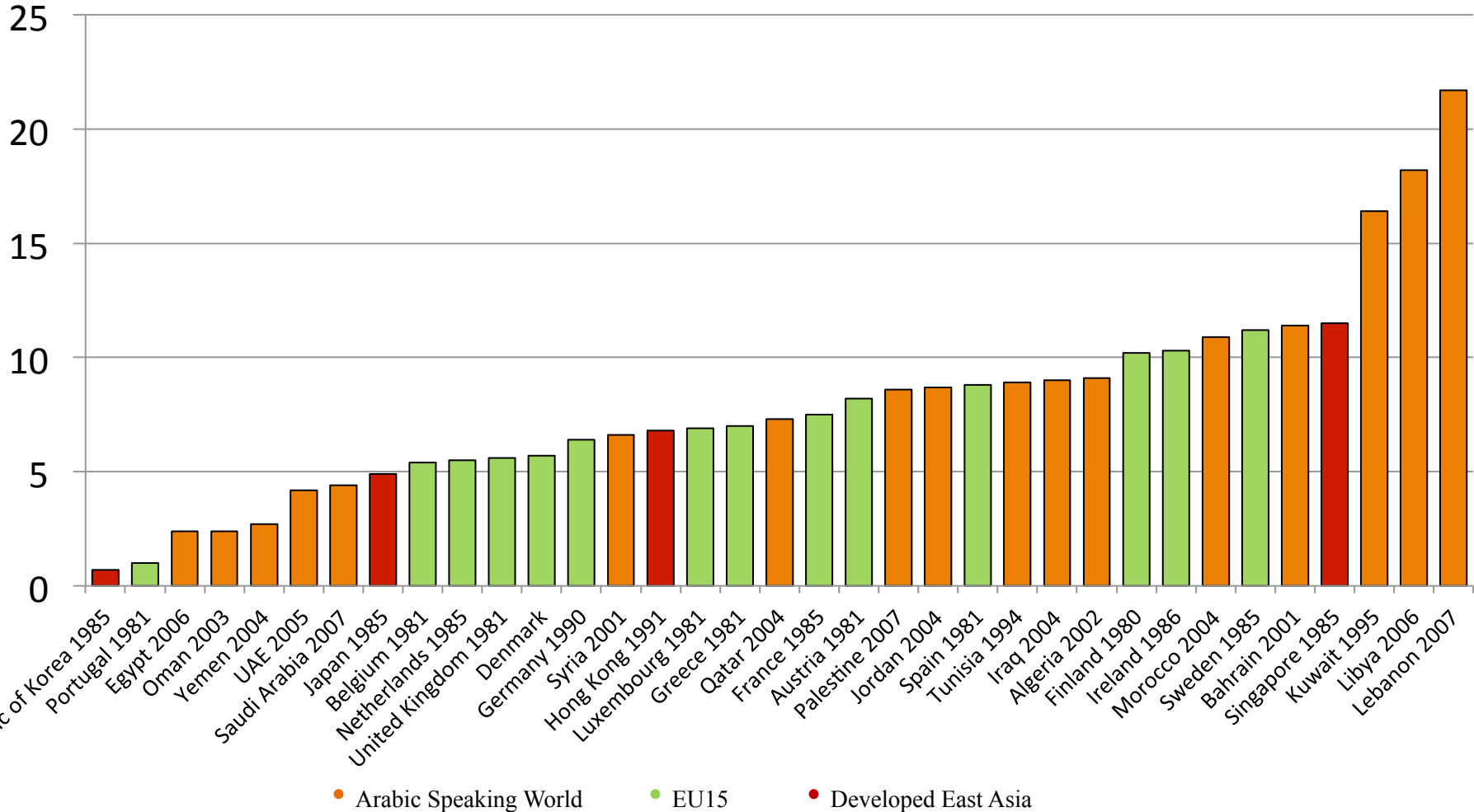
## Arabic Speaking World 2000s, EU15 2000s, Developed East Asia 2000s



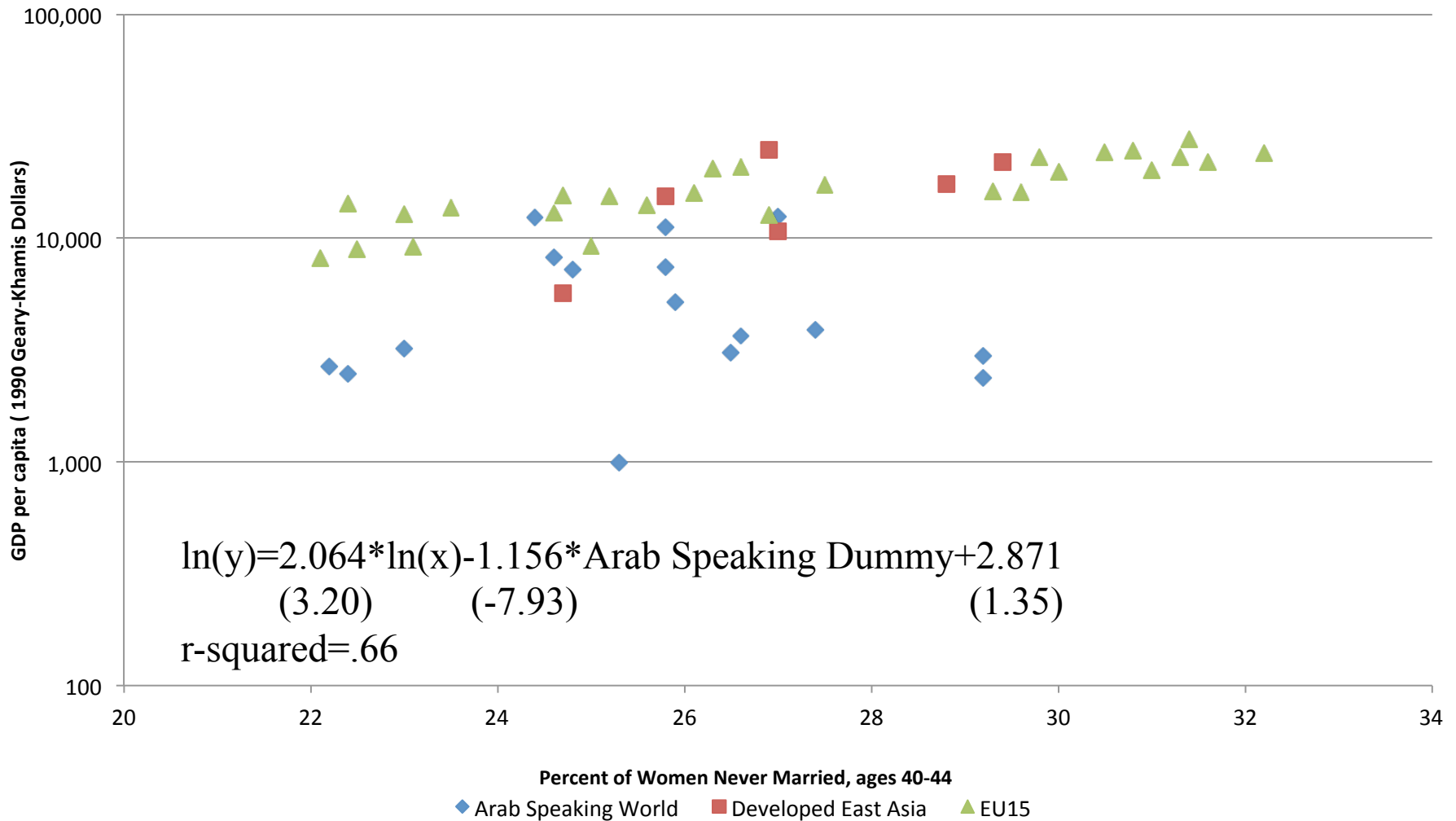
● Arabic Speaking World    ● EU15    ● Developed East Asia

# Percentage Women Never Married Ages 40-44

## Arabic Speaking World 2000s, EU15 1980s, Developed East Asia 1980s



# GDP per capita vs. Singulate Female Mean Age of Marriage: Developed and Arabic-Speaking Societies



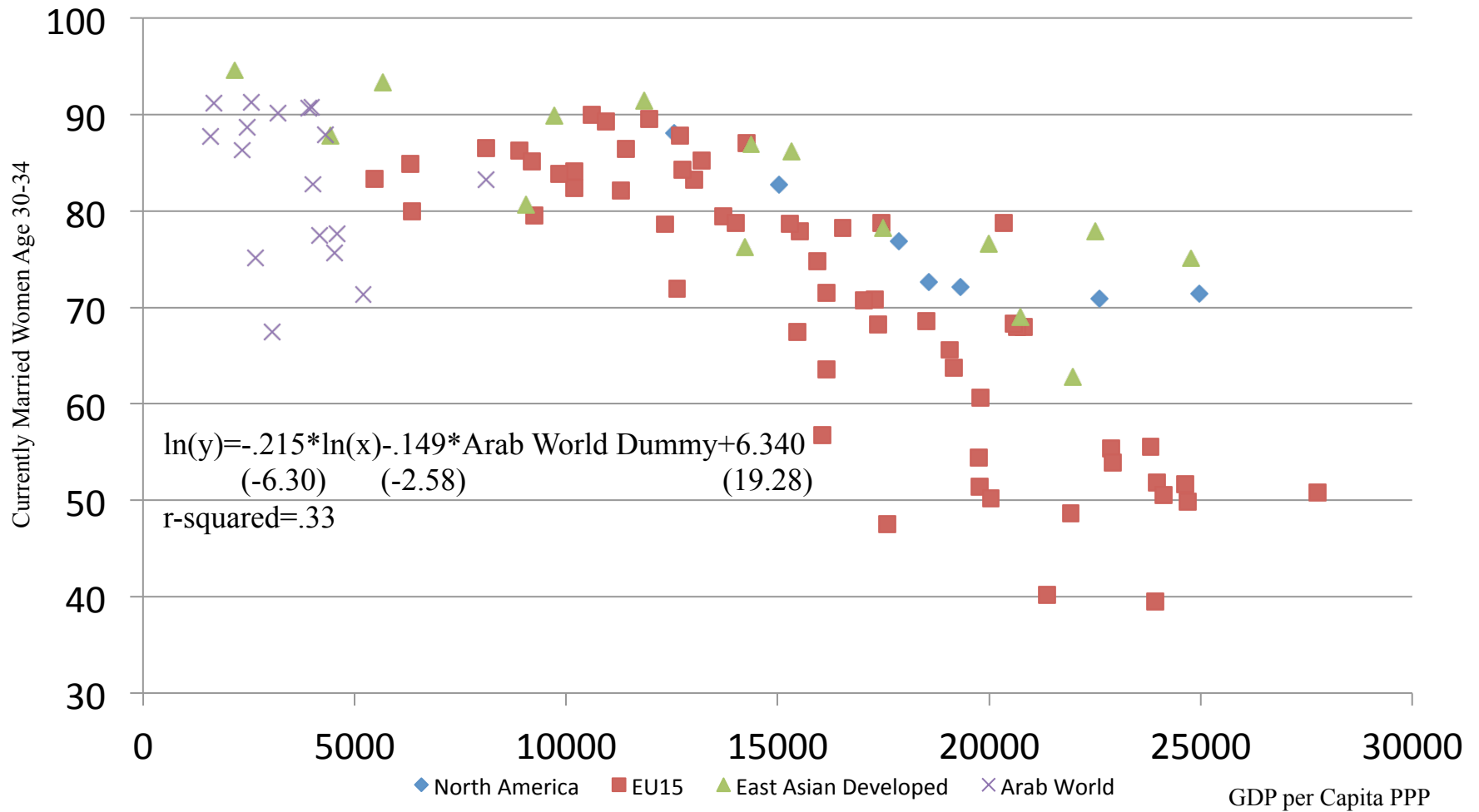
Source: GDP per capita- Angus Maddison Statistics of World Population, GDP and Per Capita GDP, 1-2008 AD, <http://www.ggd.net/MADDISON/oriindex.htm>

Singulate Female Mean Age of Marriage- UN Population Division, World Marriage Data 2008

[http://www.un.org/esa/population/publications/WMD2008/WP\\_WMD\\_2008/Data.html](http://www.un.org/esa/population/publications/WMD2008/WP_WMD_2008/Data.html) ; UN Statistics Division <http://www.data.un.org>

Note: EU 15 includes Austria, Belgium, Denmark, Finland, France, Germany, Greece, Ireland, Italy, Netherlands, Portugal, Spain, Sweden, and the UK. North America includes Canada and the US. Asian Tigers + Japan includes Hong Kong, Korea, Singapore, and Japan. Arab Speaking includes Algeria, Bahrain, Egypt, Iraq, Jordan, Kuwait, Lebanon, Libya, Morocco, Oman, Qatar, Saudi Arabia, Tunisia, UAE, West Bank and Gaza, and Yemen.

# Currently Married Women Age 30-34 vs. GDP per Capita PPP

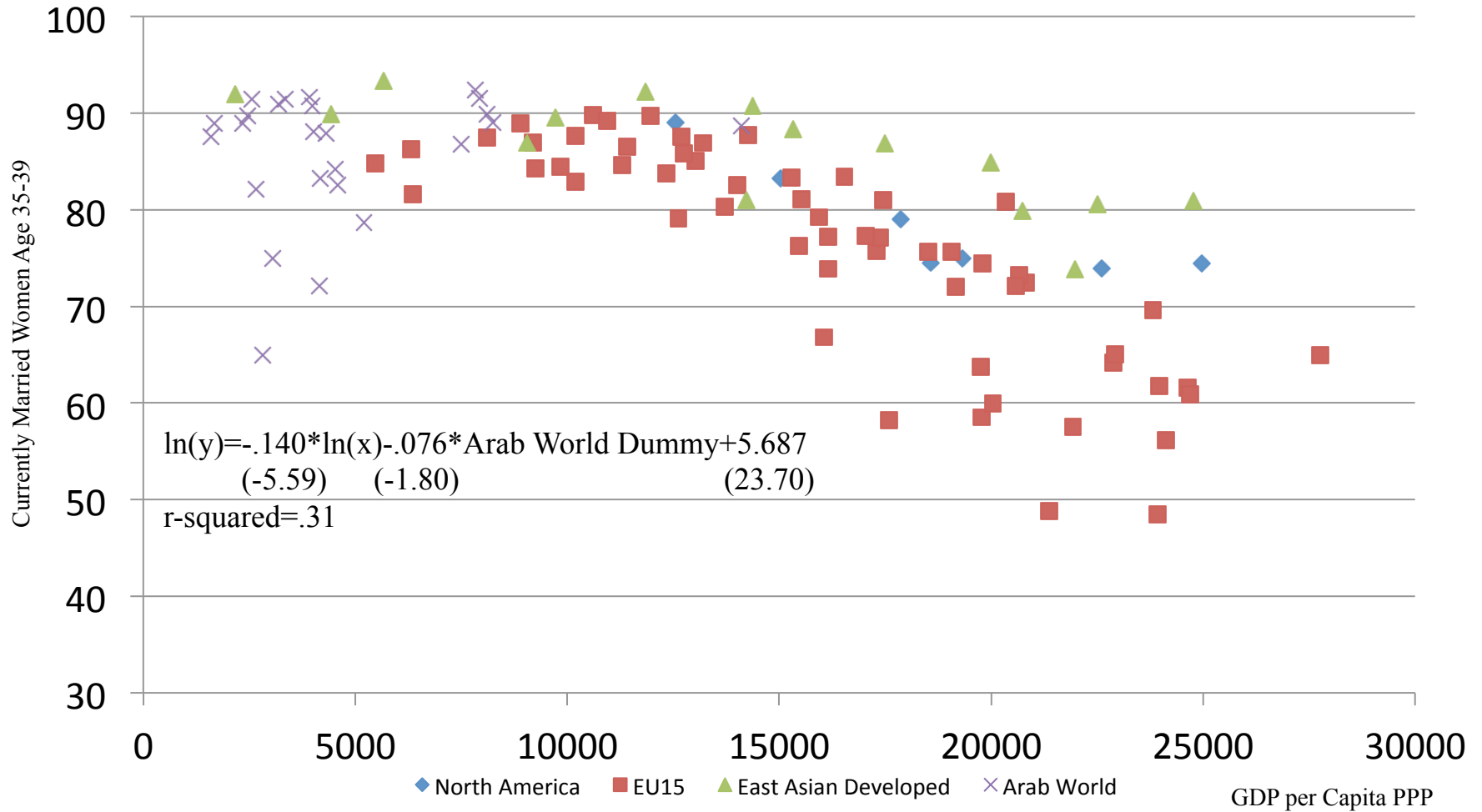


Maddison, Angus. Historical Statistics. Statistics on World Population, GDP and Per Capita GDP, 1-2008 AD. <http://www.ggd.net/MADDISON/oriindex.htm>. (Accessed: Jan 14, 2013)

United Nations, Department of Economic and Social Affairs, Population Division (2009). *World Marriage Data 2008*. Tables: Currently Married Women and Men

(POP/DB/Marr/Rev2008). [http://www.un.org/esa/population/publications/WMD2008/WP\\_WMD\\_2008/Data.html](http://www.un.org/esa/population/publications/WMD2008/WP_WMD_2008/Data.html) (Accessed: Jan 11, 2013)

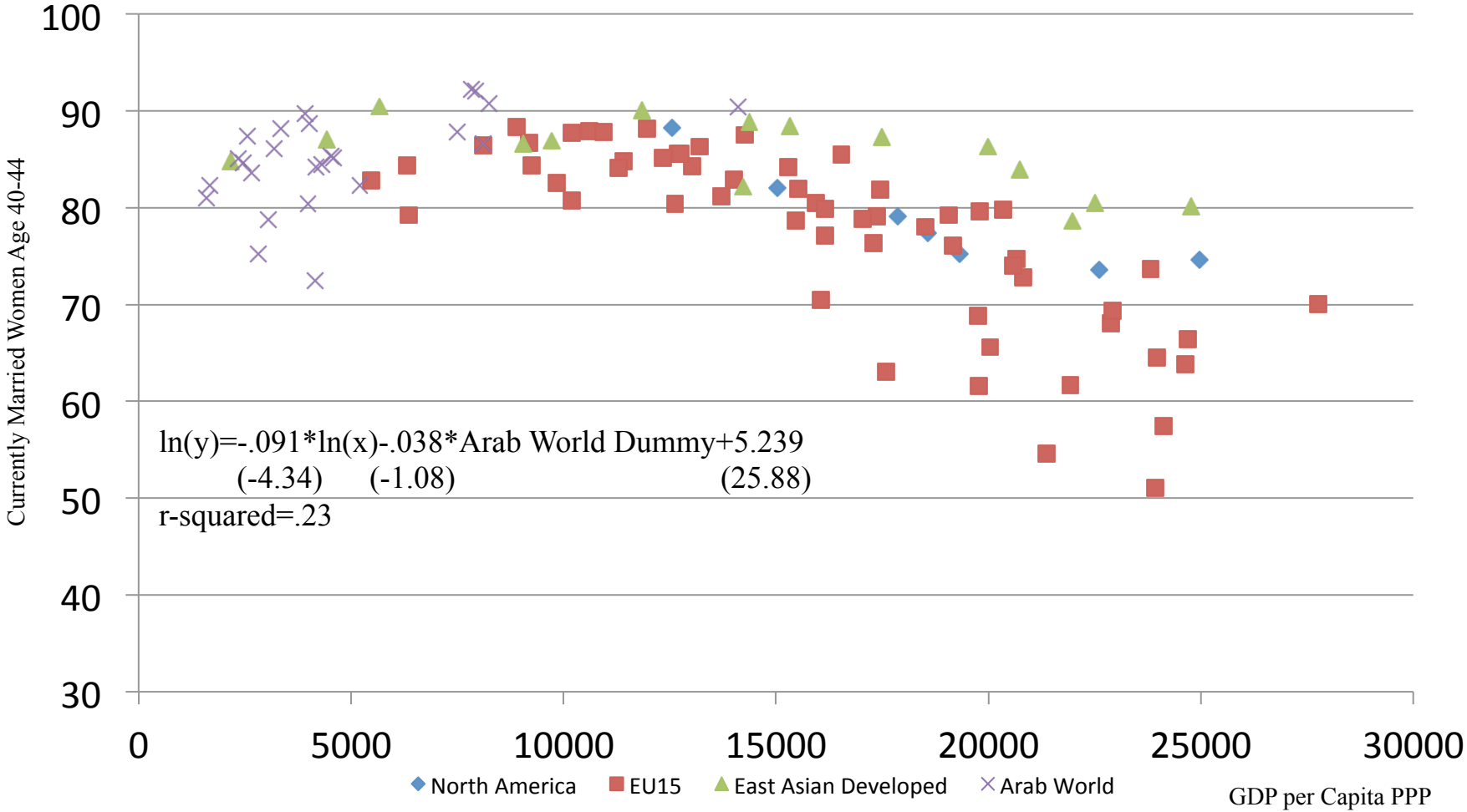
# Currently Married Women Age 35-39 vs. GDP per Capita PPP: Developed And Arabic-Speaking Societies



$\ln(y) = -.140 \cdot \ln(x) - .076 \cdot \text{Arab World Dummy} + 5.687$   
 (-5.59)      (-1.80)      (23.70)  
 r-squared = .31

Maddison, Angus. Historical Statistics. Statistics on World Population, GDP and Per Capita GDP, 1-2008 AD. <http://www.gdc.net/MADDISON/oriindex.htm>. (Accessed: Jan 14, 2013)  
 United Nations, Department of Economic and Social Affairs, Population Division (2009). *World Marriage Data 2008*. Tables: Currently Married Women and Men (POP/DB/Marr/Rev2008). [http://www.un.org/esa/population/publications/WMD2008/WP\\_WMD\\_2008/Data.html](http://www.un.org/esa/population/publications/WMD2008/WP_WMD_2008/Data.html) (Accessed: Jan 11, 2013)

# Currently Married Women Age 40-44 vs. GDP per Capita PPP: Developed And Arabic-Speaking Societies

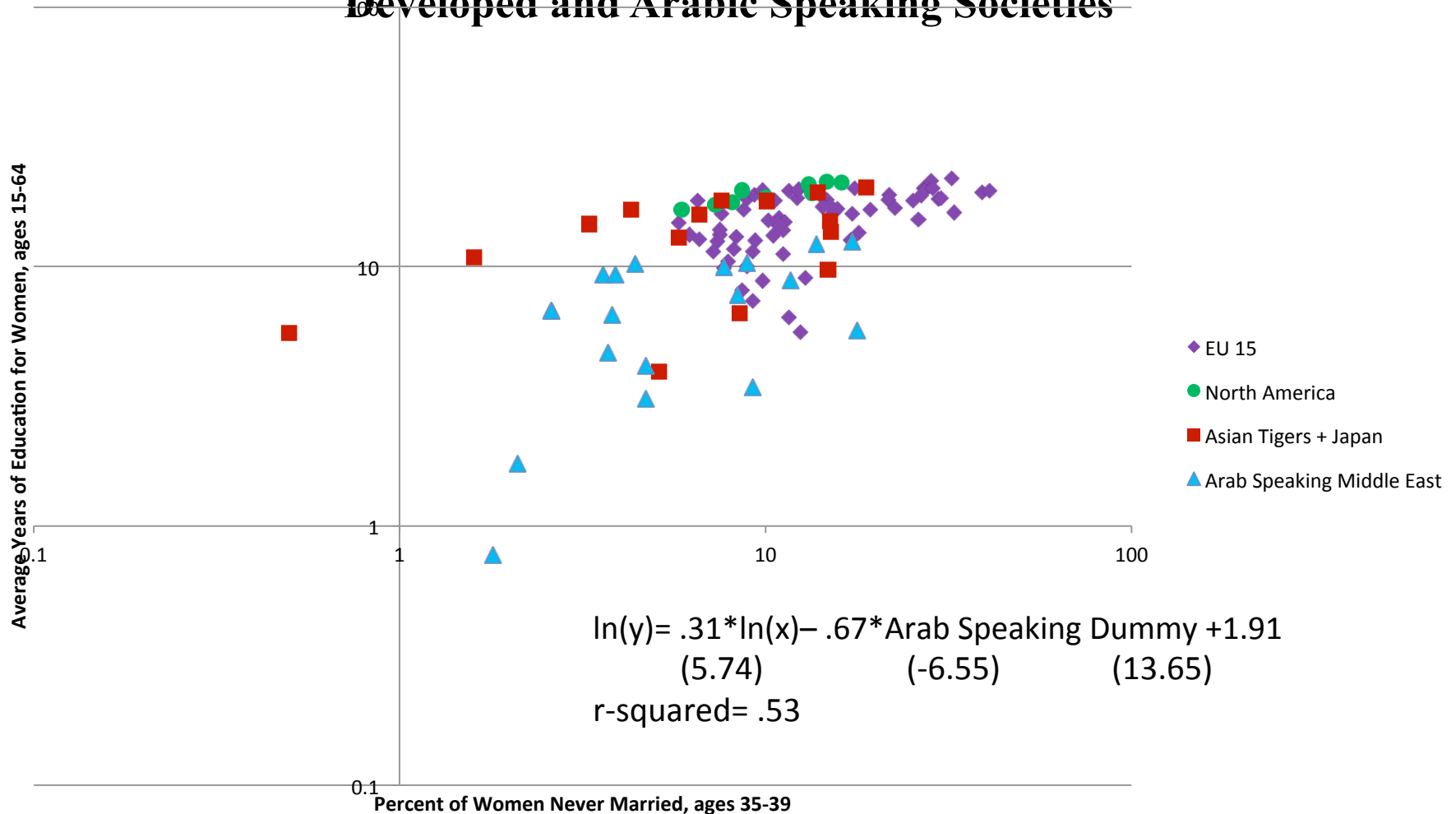


Maddison, Angus. Historical Statistics. Statistics on World Population, GDP and Per Capita GDP, 1-2008 AD. <http://www.gdc.net/MADDISON/oriindex.htm>. (Accessed: Jan 14, 2013)  
 United Nations, Department of Economic and Social Affairs, Population Division (2009). *World Marriage Data 2008*. Tables: Currently Married Women and Men (POP/DB/Marr/Rev2008). [http://www.un.org/esa/population/publications/WMD2008/WP\\_WMD\\_2008/Data.html](http://www.un.org/esa/population/publications/WMD2008/WP_WMD_2008/Data.html) (Accessed: Jan 11, 2013)





# Average years of Education, Women ages 15-64 vs. Percent of Women Never Married, ages 35-39: Developed and Arabic Speaking Societies

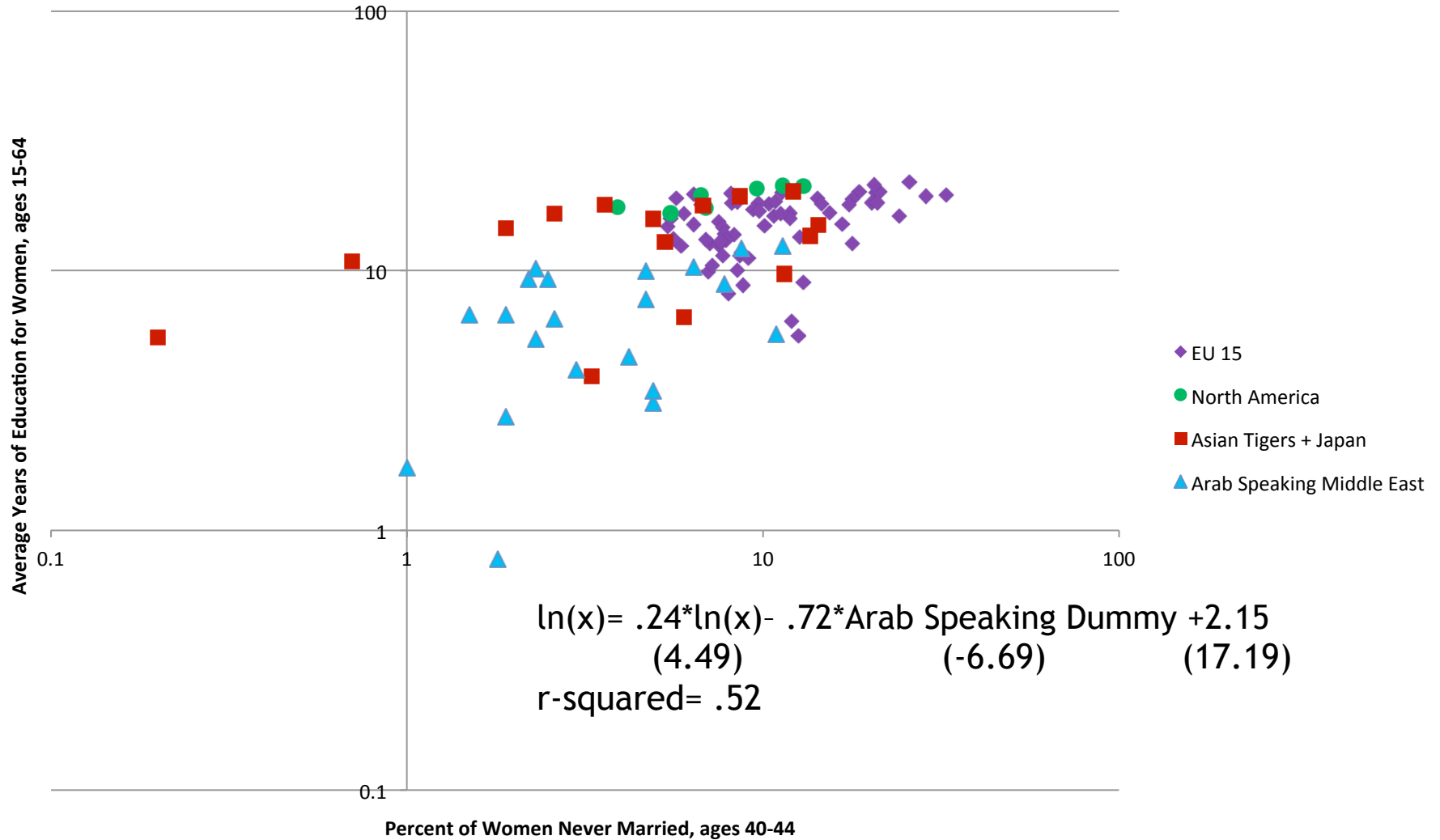


Source: Education- Encyclopedia of Nations International Institute for Applied Systems Analysis, <http://www.nationsencyclopedia.com/WorldStats/Edu-iiasa-years-schooling-15-64-female.html>

Marriage- United Nations Population Division World Marriage Data 2008, <http://www.un.org/esa/population/publications/WMD2008/Main.html>

Note: EU 15 includes Austria, Belgium, Denmark, Finland, France, Germany, Greece, Ireland, Italy, Luxembourg, Netherlands, Portugal, Spain, Sweden, and the UK. North America includes Canada and the US. Asian Tigers + Japan includes Korea, Singapore, and Japan. Arab Speaking includes Bahrain, Egypt, Jordan, Morocco, Saudi Arabia.

# Average years of Education, Women ages 15-64 vs. Percent of Women Never Married, ages 40-44: Developed and Arabic Speaking Societies



Source: Education- Encyclopedia of Nations International Institute for Applied Systems Analysis, <http://www.nationsencyclopedia.com/WorldStats/Edu-iiasa-years-schooling-15-64-female.html>

Marriage- United Nations Population Division World Marriage Data 2008, <http://www.un.org/esa/population/publications/WMD2008/Main.html>

Note: EU 15 includes Austria, Belgium, Denmark, Finland, France, Germany, Greece, Ireland, Italy, Luxembourg, Netherlands, Portugal, Spain, Sweden, and the UK. North America includes Canada and the US. Asian Tigers + Japan includes Korea, Singapore, and Japan. Arab Speaking includes Bahrain, Egypt, Jordan, Morocco, Saudi Arabia.