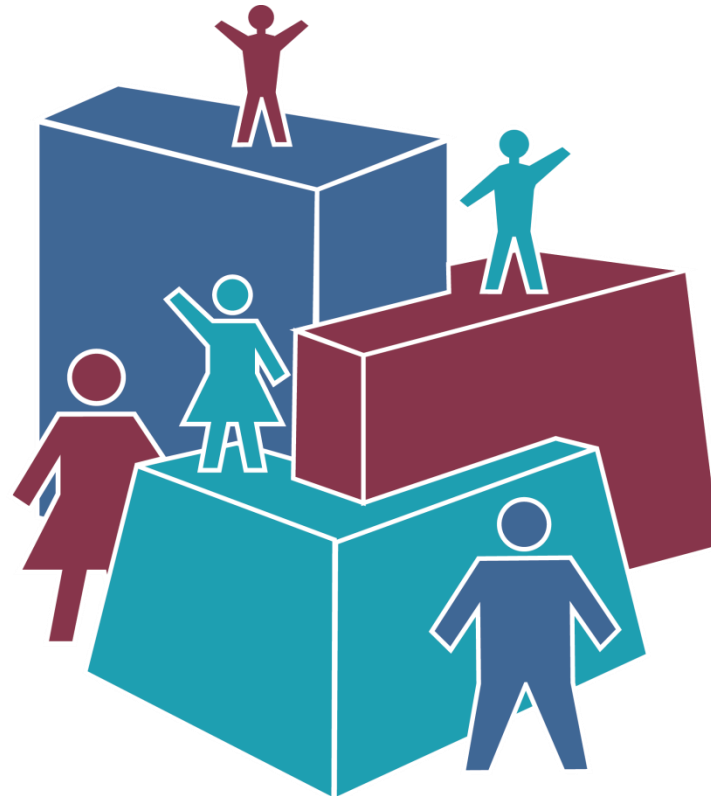


USING RESEARCH AND ANALYSIS TO BUILD BETTER PUBLIC POLICY FOR FAMILIES

BY KAREN BOGENSCHNEIDER
PROFESSOR, UNIVERSITY OF WISCONSIN-MADISON

USING RESEARCH AND ANALYSIS TO BUILD
BETTER PUBLIC POLICY FOR FAMILIES

FAMILIES ARE THE CORNERSTONE OF A STRONG SOCIETY AND A SOUND ECONOMY



WHEN U.S. POLICYMAKERS MAKE PUBLIC POLICY DECISIONS

U.S. policymakers almost always ask:

- ⦿ *What is the economic impact of this policy decision?*

U.S. policymakers seldom ask:

- ⦿ *What is the family impact of this policy decision?*





HOW COULD THE U.S. BUILD BETTER PUBLIC POLICIES FOR FAMILIES?

- (1) Public policy decisions could be more effective if they were based on hard evidence drawn from rigorous research and dispassionate analysis.
- (2) Public policy decisions could be more efficient if they leveraged the contributions that families make to society.

HOW CAN WE COMMUNICATE RESEARCH-BASED, FAMILY-FOCUSED INFORMATION TO POLICYMAKERS?

An aerial photograph of a large body of water, likely a lake or reservoir, surrounded by dense, lush green forest. The water is a deep blue color, and the forest covers the majority of the land area. A small white boat is visible on the right side of the water. Three text labels are overlaid on the image: 'Island of Policy' in the upper center, 'Family Impact Seminars' in the lower right, and 'Island of Research' in the lower left.

Island of Policy

Family Impact Seminars

Island of Research

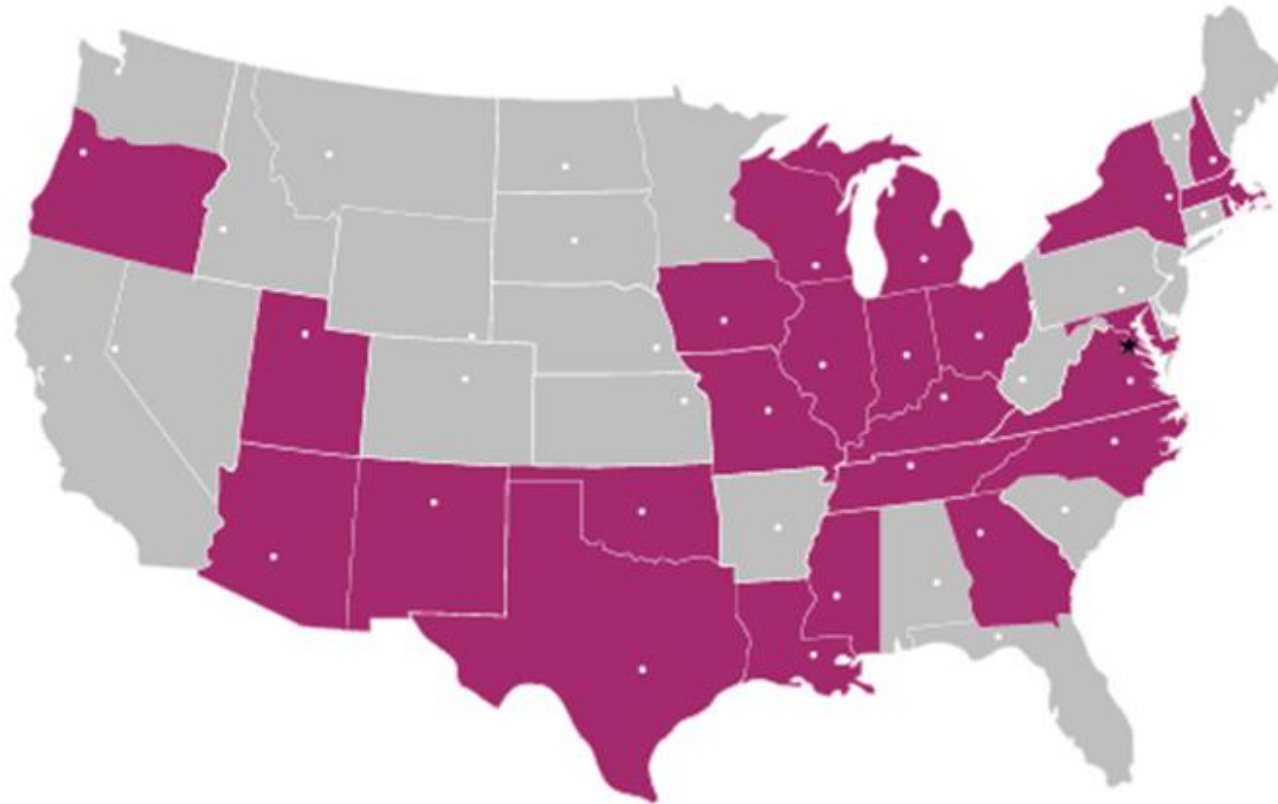
THE FAMILY IMPACT SEMINARS:

A series of

- ⊙ Presentations
- ⊙ Discussion Sessions, and
- ⊙ Briefing Reports

For communicating research and analysis to state policymakers now operating in 25 states and the District of Columbia in the U.S.

FAMILY IMPACT INSTITUTE NETWORK



SINCE, 1993, OVER 190 FAMILY IMPACT SEMINARS HAVE BEEN CONDUCTED

On topics that are family policies:

- ⊙ Child abuse and neglect
- ⊙ Early childhood care and education
- ⊙ Family caregiving for the elderly
- ⊙ Family poverty
- ⊙ Parenting

On topics that are not family policies, but that benefit from the family impact lens:

- ⊙ Economic growth
- ⊙ Health care
- ⊙ Jobs
- ⊙ Workforce development

WHAT IS THE SECRET SAUCE THAT MAKES THE SEMINARS EFFECTIVE?

- ⦿ Policymakers prefer the oral over the written word.
- ⦿ Policymakers want information that is high-quality.
- ⦿ Policymakers want objective information on a range of policy options.
- ⦿ Policymakers prefer information from people in trusted relationships.

**THE FAMILY IMPACT SEMINARS:
USING RESEARCH AND ANALYSIS TO
BUILD BETTER PUBLIC POLICY FOR FAMILIES.**

