



Sustainable City Design and Families

Professor Mohamed Gamal Abdelmonem

Chair in Architecture, Director, Centre for Architecture, Urbanism and Global Heritage

York School of Architecture, University of York



Understanding The Sustainable City, Family and Homes

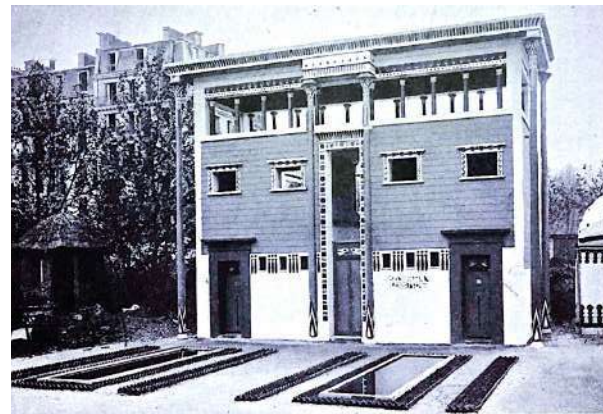
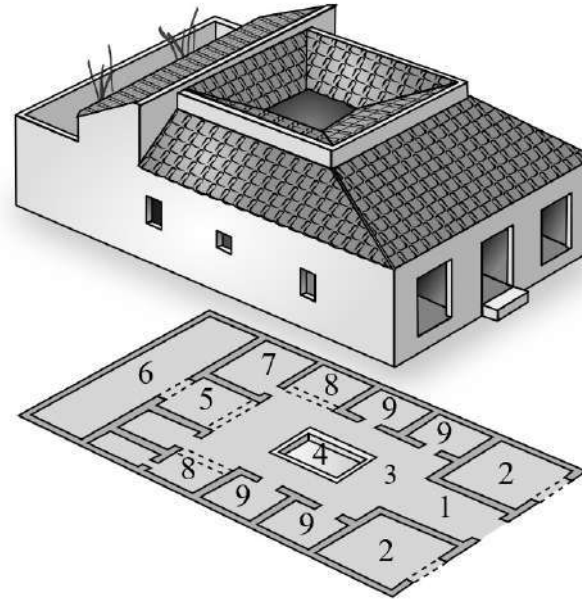
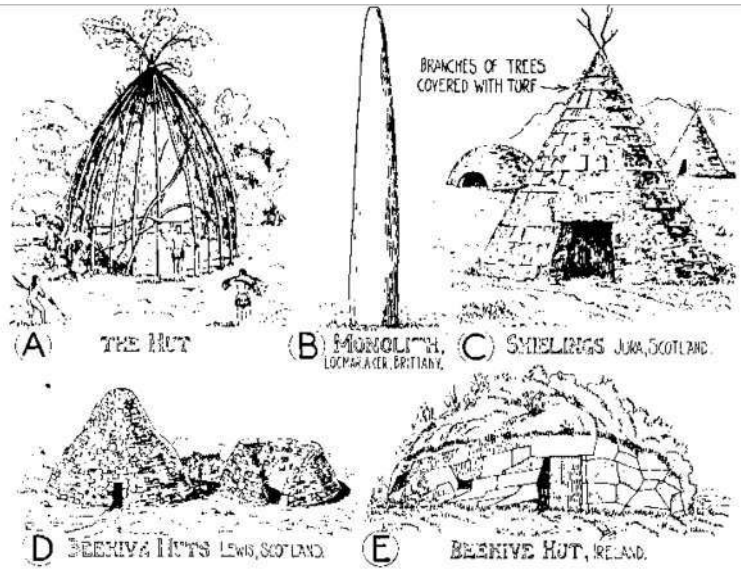
*'The real meaning of beauty, the idea of houses as places which express one's life, directly and simply, the connection between **vitality of the people** and the shape of their houses, the connection between the **force of social movements** and the beauty and vigour of the **places where people live** - this all forgotten, vaguely remembered as the elements of some imaginary golden age.'*

Alexander 1985: 24

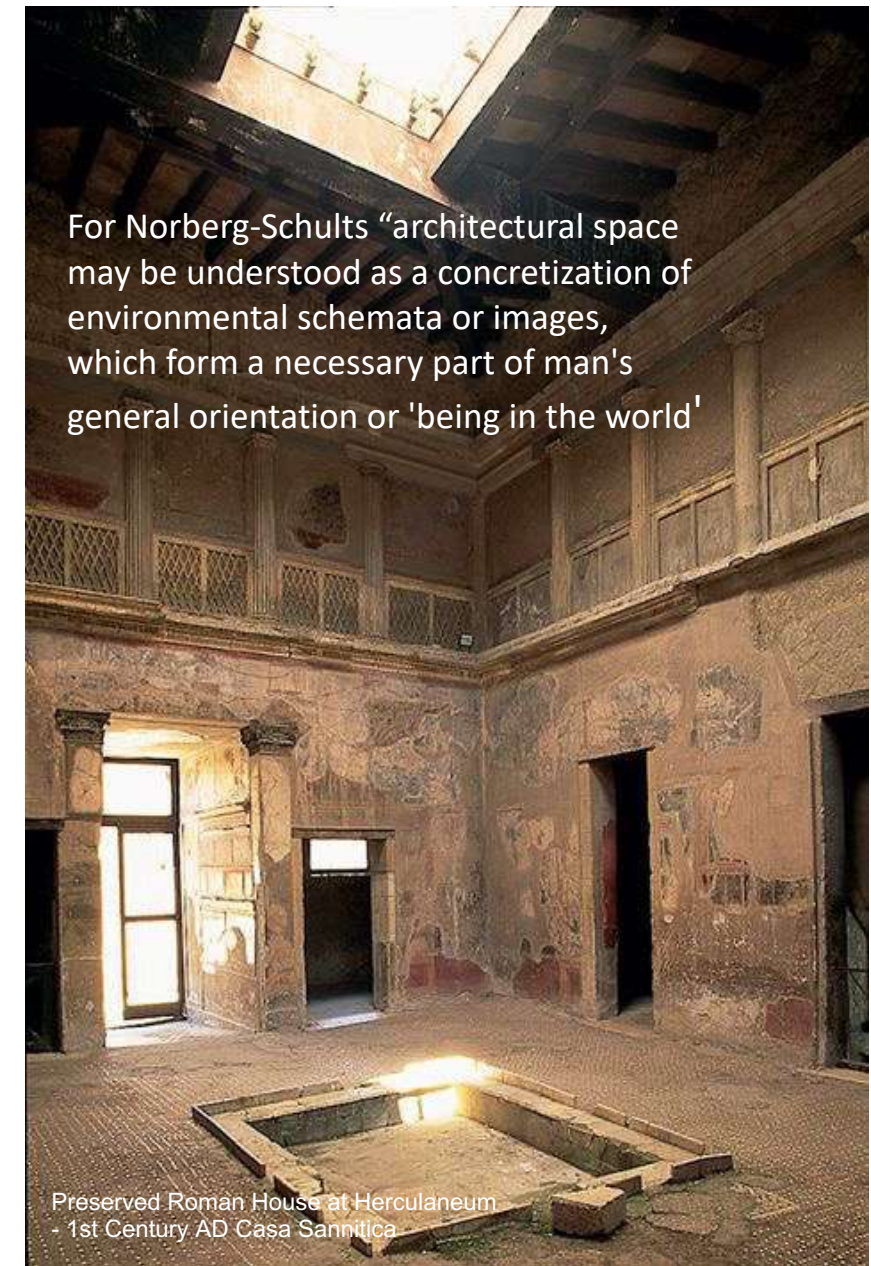
*'The **intertwinement of social spaces** is a law',*
Henri Lefebvre, 1991



The Evolution of Family Living: From Home to City



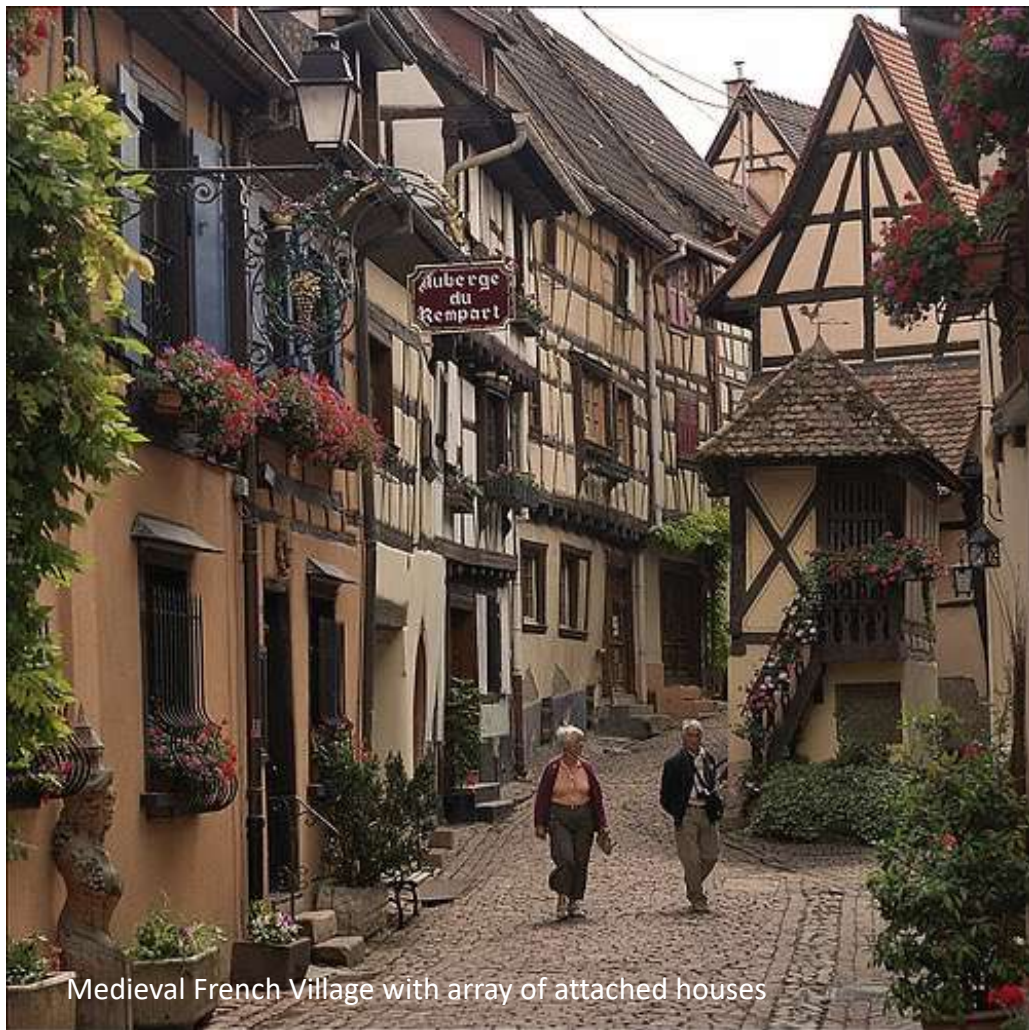
9. AN EGYPTIAN HOUSE.
As erected at the Paris Exhibition, 1889, by M. Garnier.



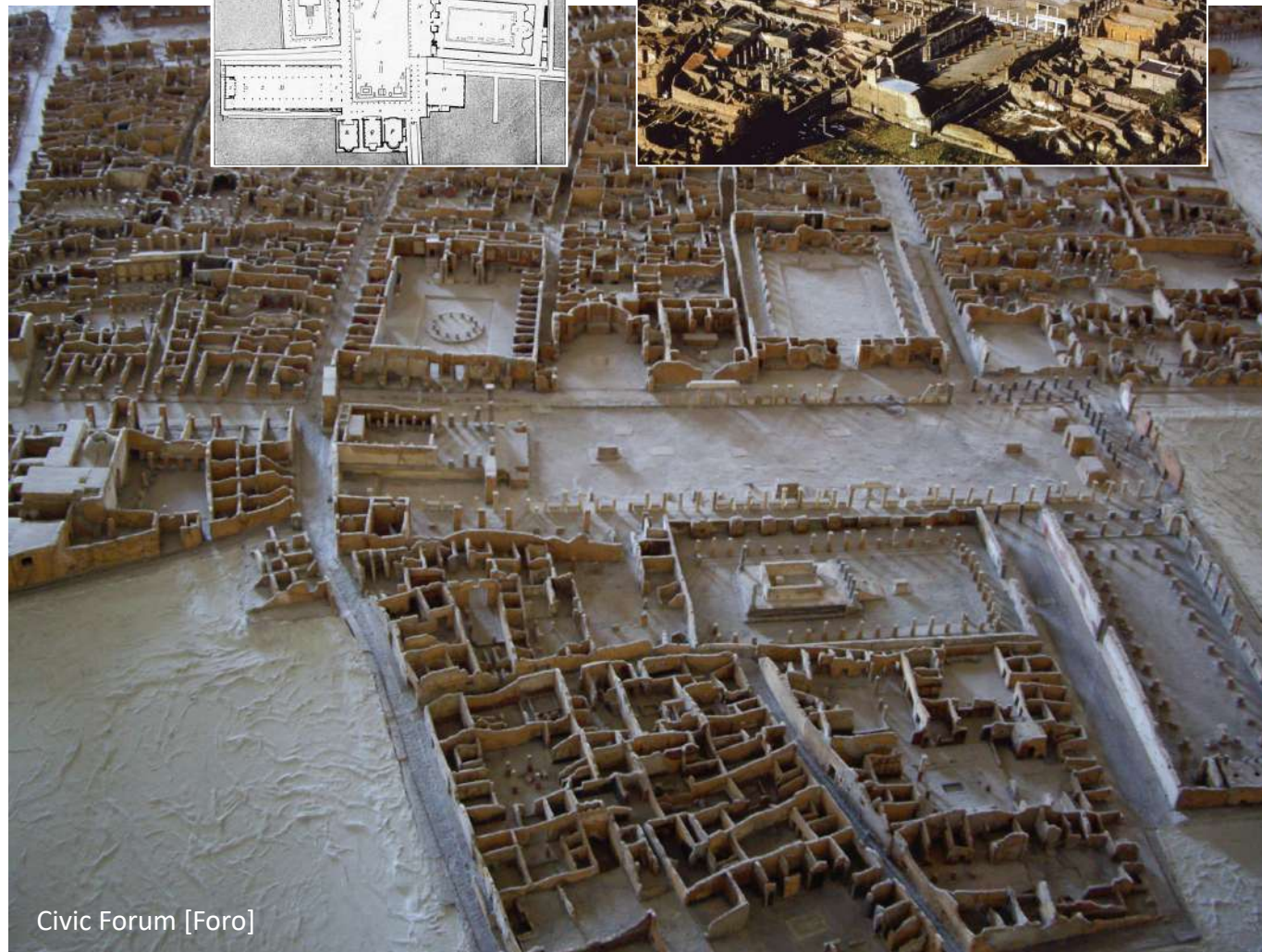
For Norberg-Schults "architectural space may be understood as a concretization of environmental schemata or images, which form a necessary part of man's general orientation or 'being in the world'"

Preserved Roman House at Herculaneum
- 1st Century AD Casa Sannitica

The Evolution of Family Living: From Home to City



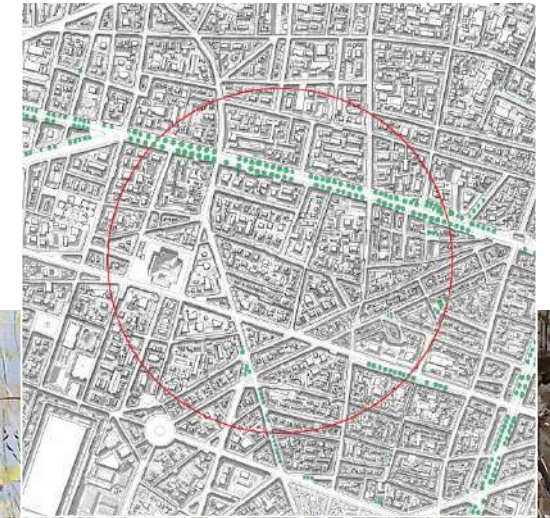
Medieval French Village with array of attached houses



Civic Forum [Foro]

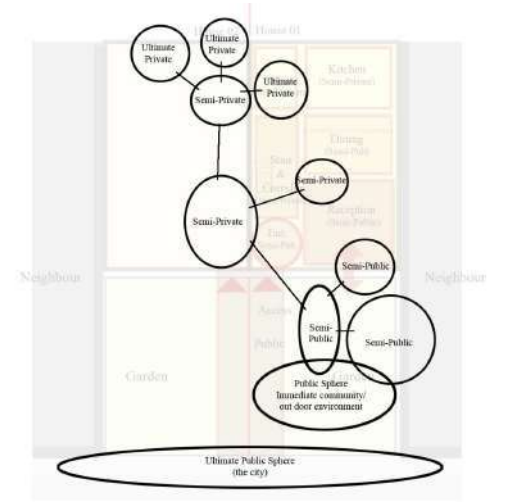
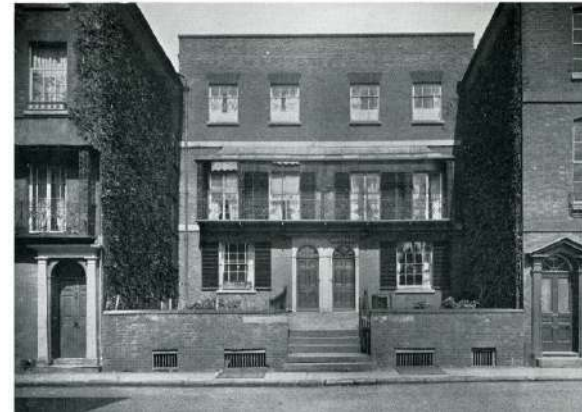
Our Perceptions of Sustainable City Social Engagement and City Spaces

Living Downtown: The Parisian dream and the rise of tenancy society, From Paris to New York



Rehs
Galleries, Inc.

Sustainable City and the Change Changing Culture of Living

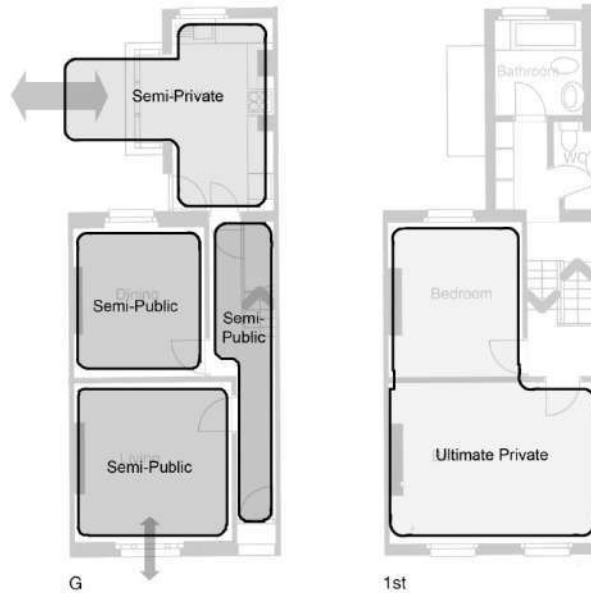


19th century: Victorian-Terraced Houses

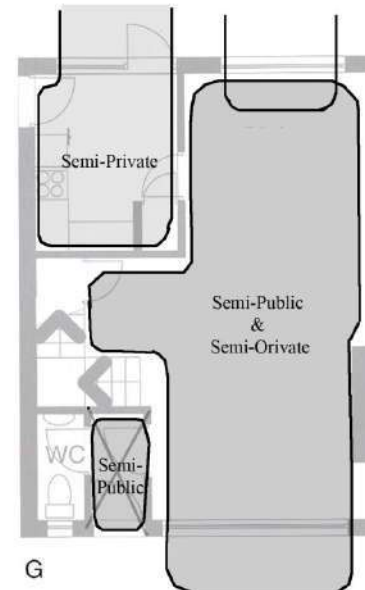
1960s -1990s: Semi-detached Houses



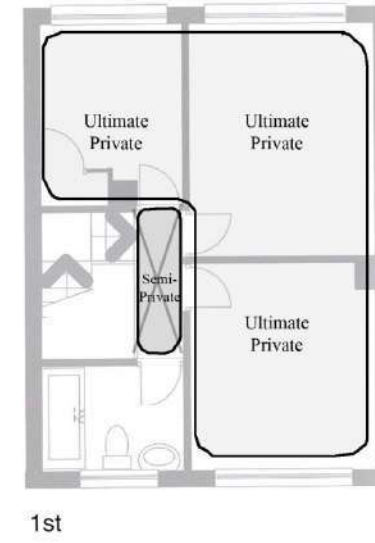
Plans of typical Victorian-terraced house



Plans of typical Victorian-terraced house



Plans of typical 1960s semi-detached house



1st

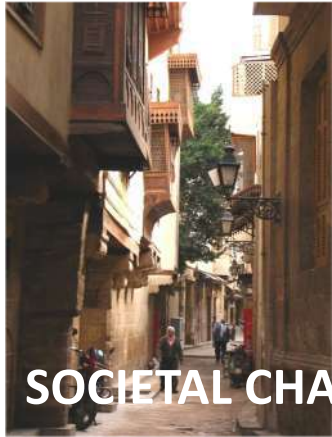
Sustainable City and the Change Changing Culture of Living



From Sustainable Locality to
Unsustainable Metropolis; Changing
Patterns of Family Living



Sustainable City and the Change Changing Culture of Living



SOCIETAL CHANGE & SOCIO-ECONOMIC DEMANDS

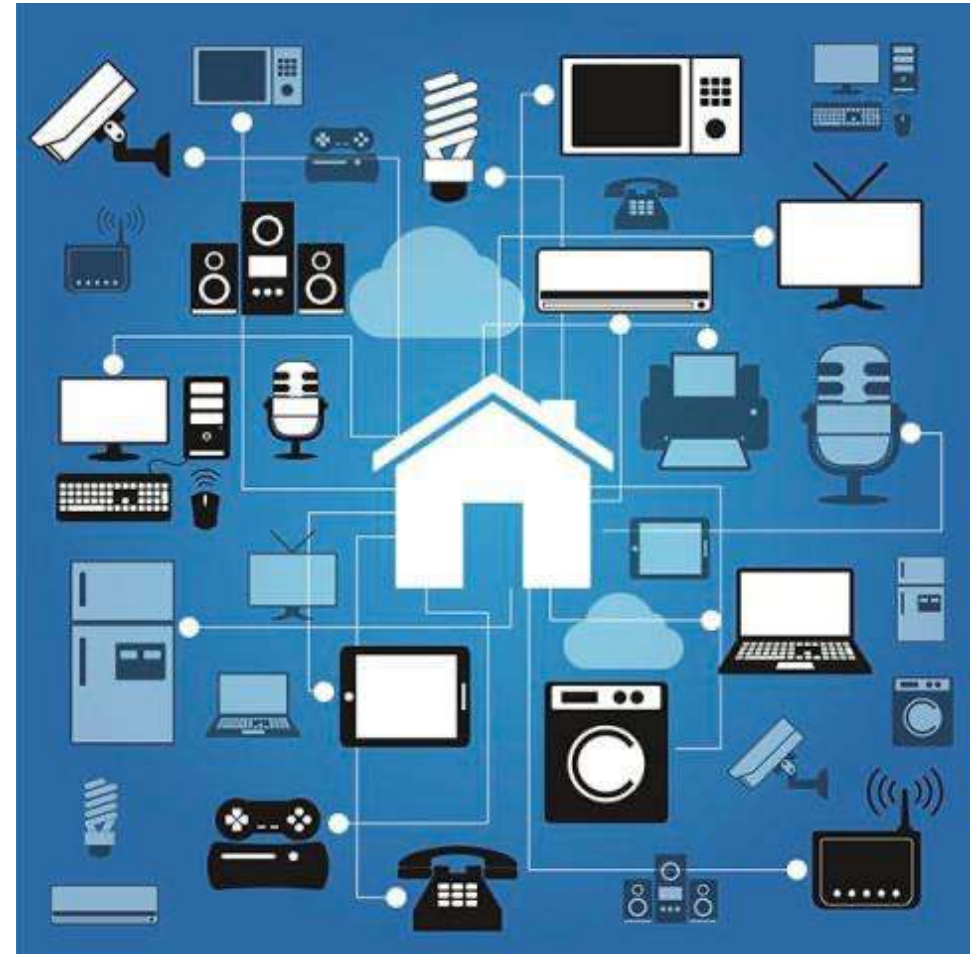
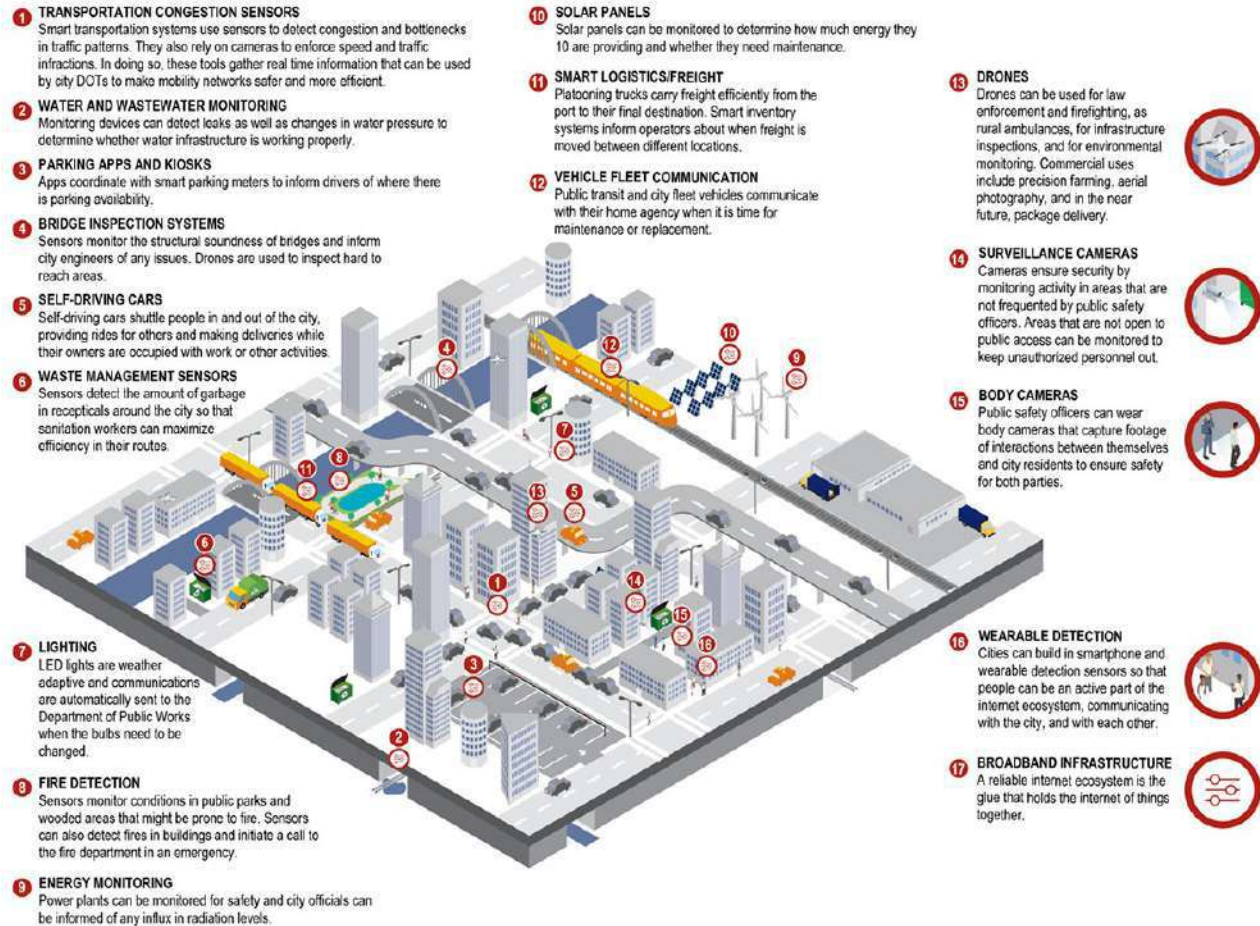


TECHNOLOGICAL EVOLUTION



Sustainable City in the age of the Cloud: From Physical to Virtual connectivity

Artificial Intelligence Environments



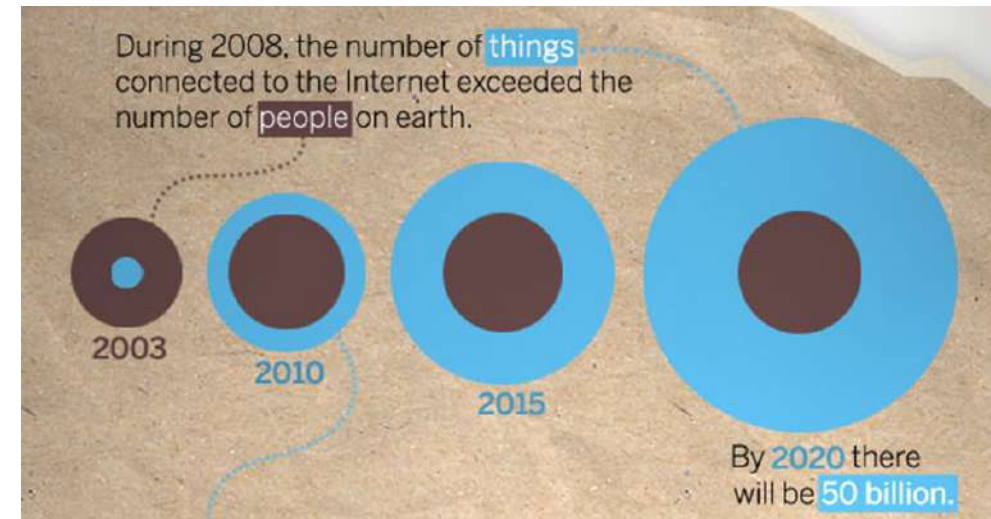
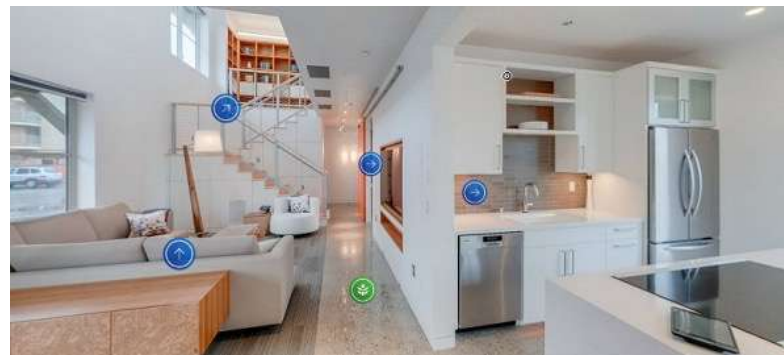
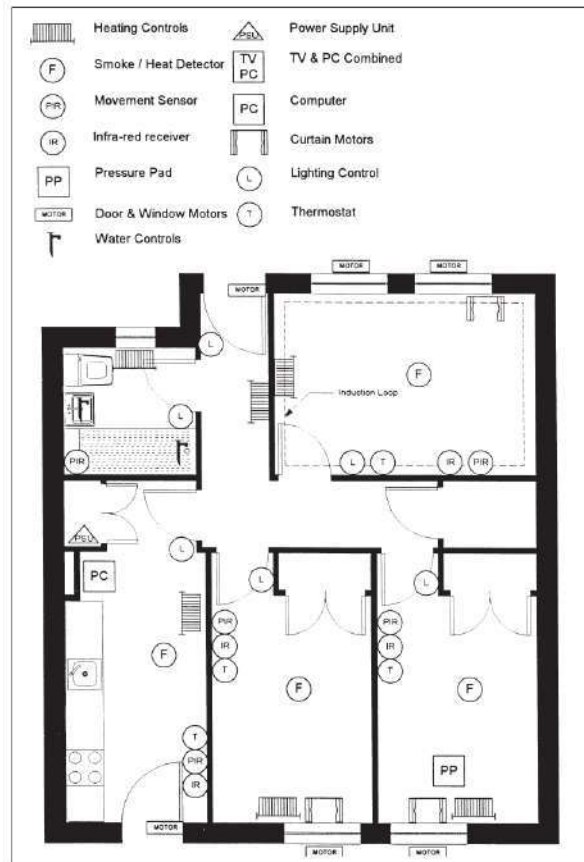
Net Zero Energy 'Smart Home'
By Honda

Net Zero Energy 'Smart Home' By Honda

Sustainable City in the age of the Cloud: From Physical to Virtual connectivity

Smart Home and Smart City: Ambient Intelligence

Artificial Intelligence Environments



Key Principles of Sustainable City Design: Families and Children First

“Designing cities for the systems that support the wellbeing and future of children causes us to infuse them with nature; select, educate, house and properly pay superb teachers; build walkable and bikeable neighbourhoods; eliminate environmental toxins; and generate meaningful work for their parents and affordable homes for their families - in short, do everything needed to make a well-tempered city.”

— Jonathan F. P. Rose, author of “The Well-Tempered City”,



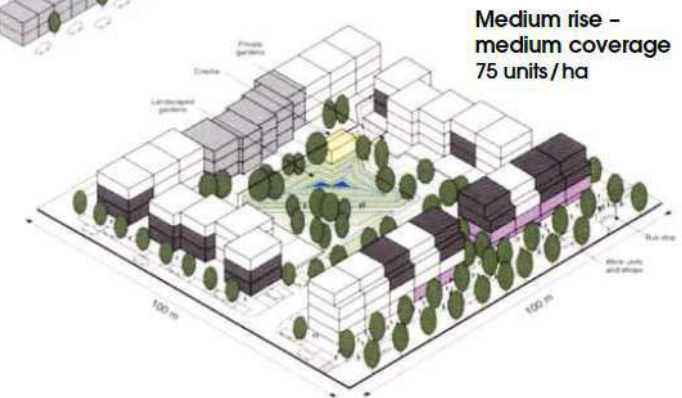
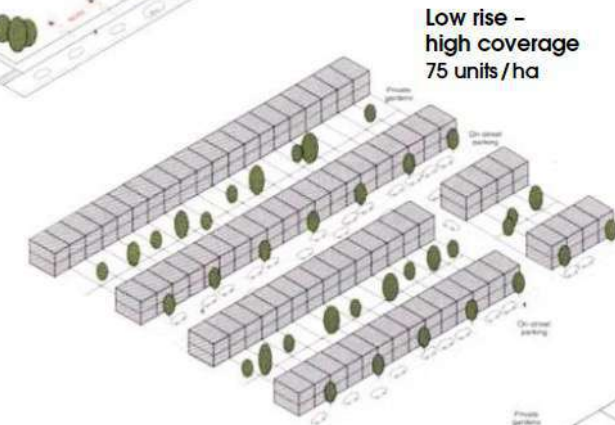
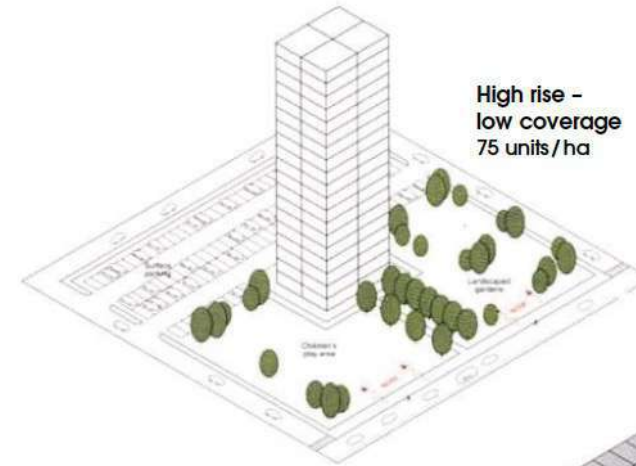
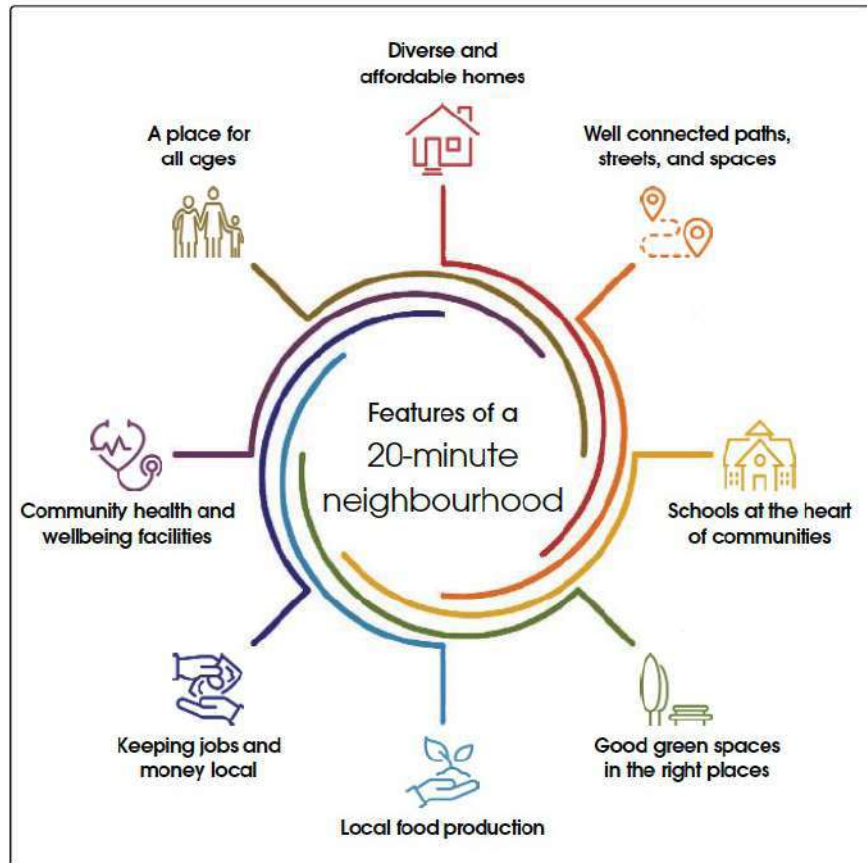
Tirana, Albania. The mayor called on the city’s young citizens to progress ambitious sustainable development goals. (ARUP: Cities Alive: Designing for urban childhoods)

Key Principles of Sustainable City Design: Liveability and Self-Sufficient Locality

The Idea and concept of:

20-minute neighbourhood
15-minute cities

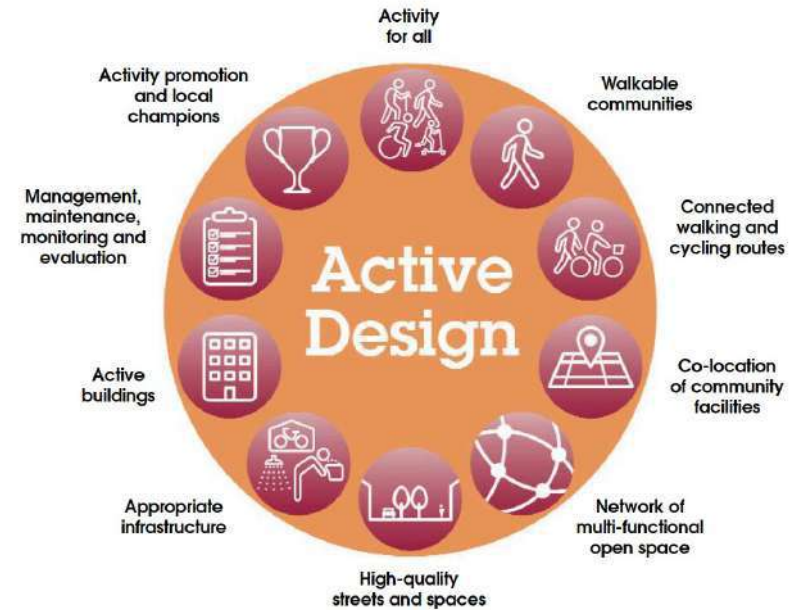
*Paris, Melbourne
and Portland*



Key Principles of Sustainable City Design: Family-centric Active Design



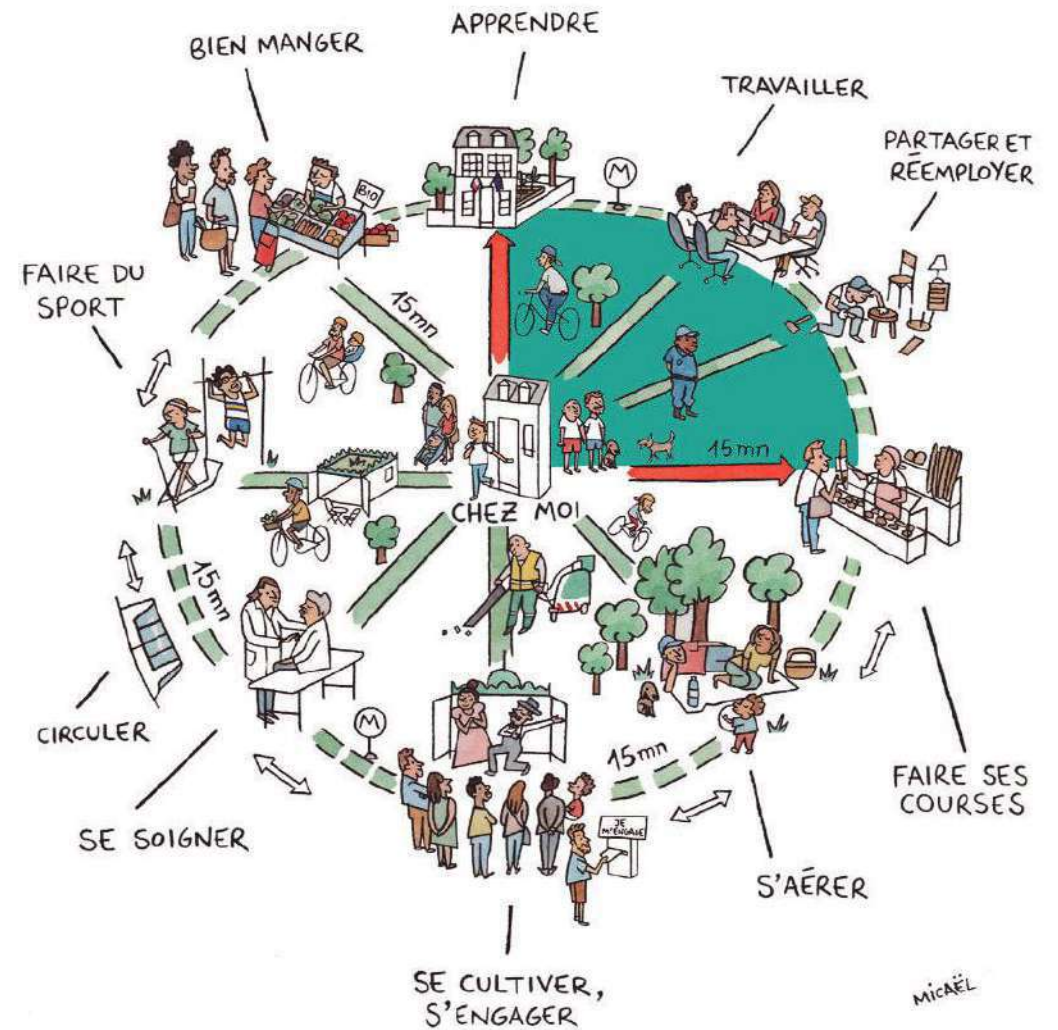
Master planning, street layout, urban parks, connectivity, density, and active travel, Link to creation of 20-minute neighbourhoods.



Key Principles of Sustainable City Design: Family-centric 15-minutes City

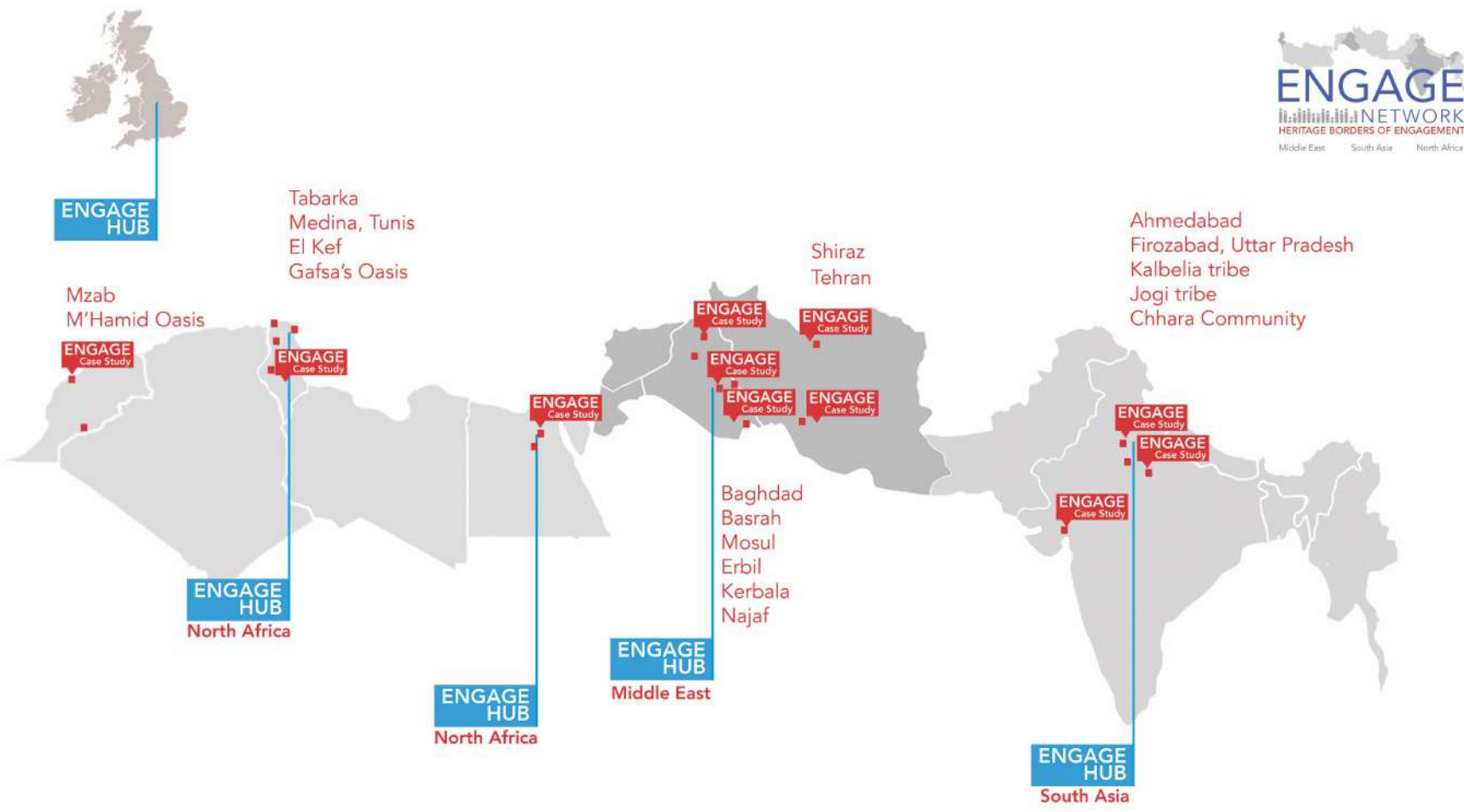


Montmartre, Paris



Ville du quart d'heure, or city of 15 minutes

The Sustainable City of the People: Localities, Migration and Displacement



Self-Sufficiency and Self-Organise during COVID-19, Ahmedabad, India

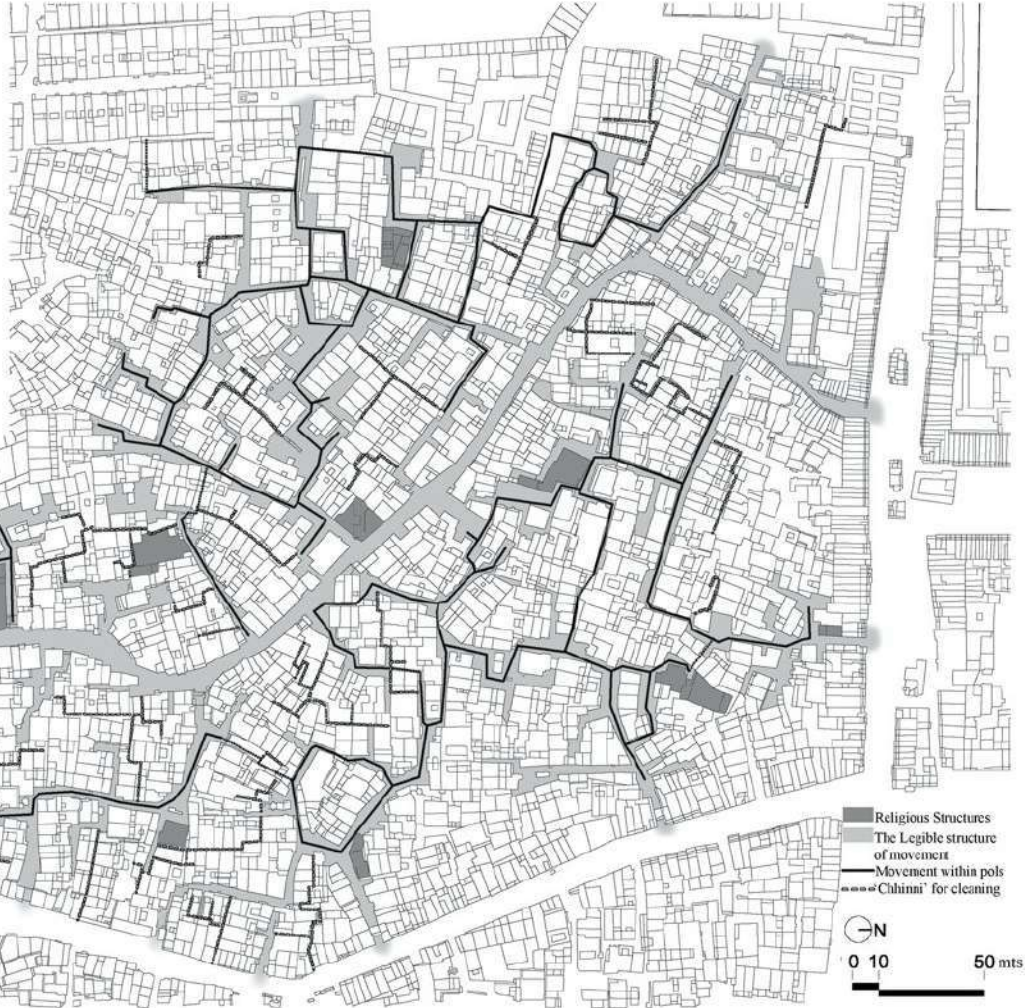
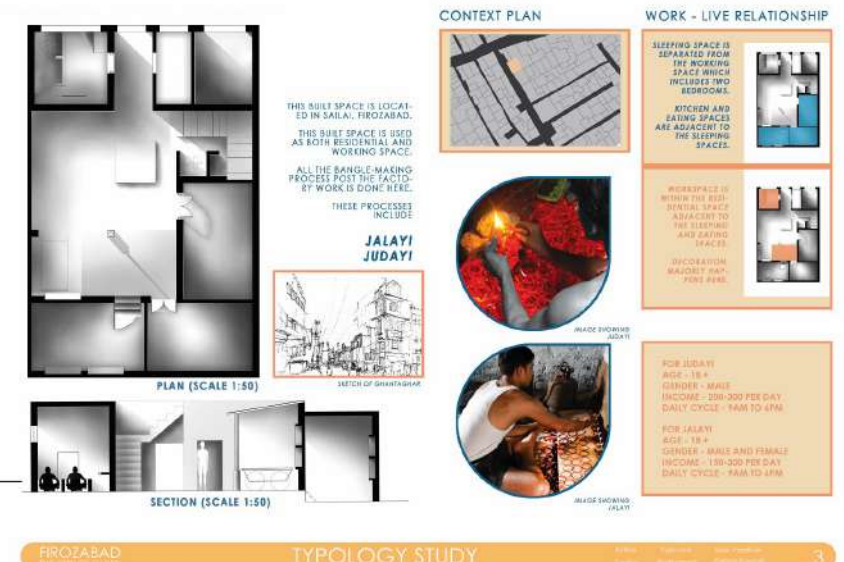


PLATE III
 Problematizing 'Heritage' in context of Sustainable Development of a Living Historic City
 Jigna Desai DP2611 CEPT University

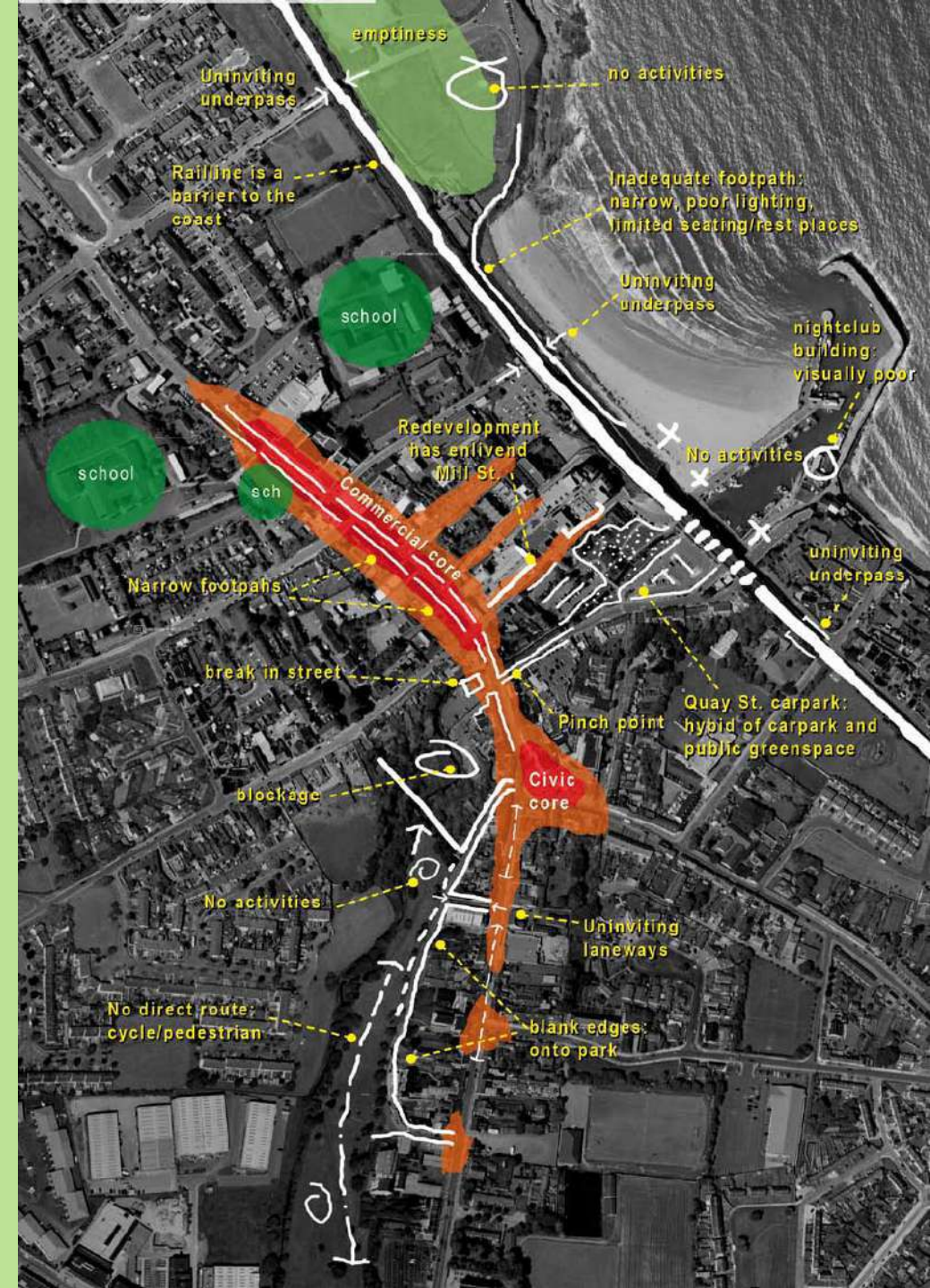
The Sustainable City of Craft Making and Production in Firozabad, India



Concluding Remarks

Technology is not merely a means to an end, but it can shape our sustainable futures around the network of family needs, support and infrastructures.

- The model of **Sustainable City Design** stems from the breakdown of large cities and metropolis into smaller **sustainable and self-sufficient neighbourhoods**.
- **20-minute neighbourhoods** are growing in influence but with limited implementation on the ground.
- **Sustainable Design of cities** will increasingly rely on **technology as support infrastructure** for families: **Intertwined physical and virtual worlds** of Knowledge, culture, and trade.
- Women are key and **active agents of change**, not on the level of the family or care, but on the level of local networks, social engagement, education about Climate Emergency.
- Working from home can **redesign cities' infrastructures**, but it becomes so intrusive to family life and dominates social activities.



Thank you

Professor Mohamed Gamal Abdelmonem

E-mail: m.gamal@York.ac.uk

York School of Architecture, University of York